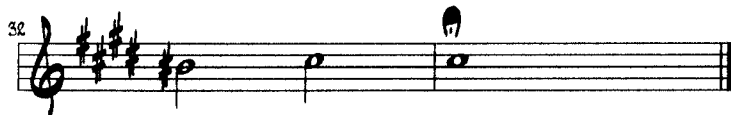
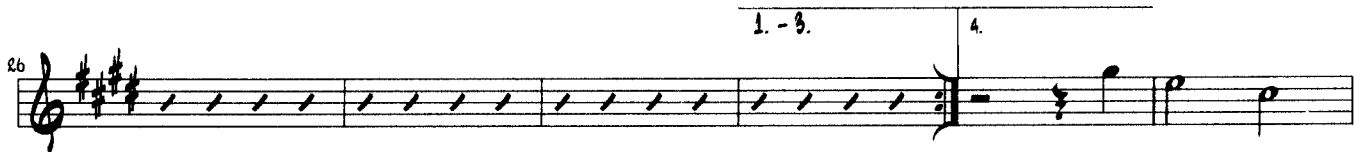
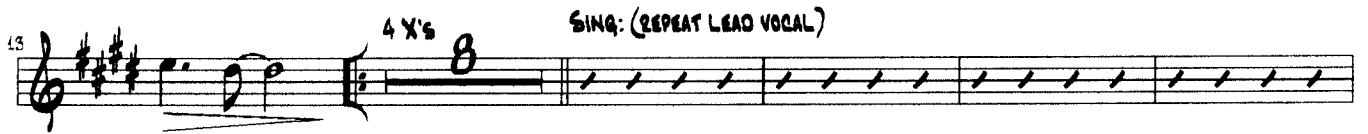


MINNIE THE MOOCHER

ALTO SAX 1

CAB CALLOWAY



MINNIE THE MOOCHER

ALTO SAX 2

CAB CALLOWAY

4

7

13

4 X's

SING: (REPEAT LEAD VOCAL)

26

1. - 3.

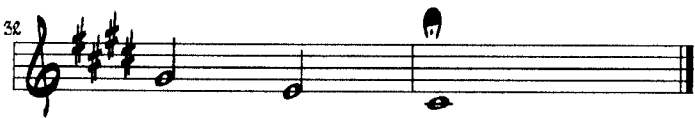
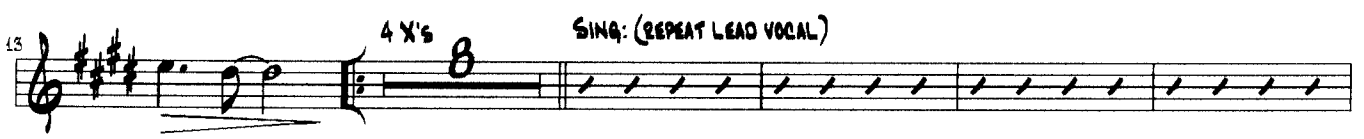
4.

32

MINNIE THE MOOCHER

BARITONE SAX

CAB CALLOWAY



MINNIE THE MOOCHER

BASS

CAB CALLOWAY

1

E_b6 D₉7 E_b6 E_b6 D₉7 E_b6 E_b6 D₉7 E_b6

Bass line for measures 1-7. The key signature is one sharp (F#) and the time signature is 4/4. The notes are: 1: G2, A2, B2, C3; 2: D3, E3, F#3, G3; 3: A3, B3, C4, D4; 4: E4, F#4, G4, A4; 5: B4, C5, D5, E5; 6: F#5, G5, A5, B5; 7: C6, B5, A5, G5.

8

Bass line for measure 8. The notes are: G2, A2, B2, C3; D3, E3, F#3, G3; A3, B3, C4, D4; E4, F#4, G4, A4; B4, C5, D5, E5; F#5, G5, A5, B5; C6, B5, A5, G5.

14

4 X's C₉ B₇ E_b6 E_b6

Bass line for measures 14-20. The notes are: 14: G2, A2, B2, C3; 15: D3, E3, F#3, G3; 16: A3, B3, C4, D4; 17: E4, F#4, G4, A4; 18: B4, C5, D5, E5; 19: F#5, G5, A5, B5; 20: C6, B5, A5, G5.

DOUBLE X FEEL (3RD TIME ONLY)

20 C₉ B₇ E_b6 E_b6

Bass line for measures 20-25. The notes are: 20: G2, A2, B2, C3; 21: D3, E3, F#3, G3; 22: A3, B3, C4, D4; 23: E4, F#4, G4, A4; 24: B4, C5, D5, E5; 25: F#5, G5, A5, B5; C6, B5, A5, G5.

26 REG. TIME (3RD TIME) 1. - 3. 4. E_b E_b C_M

Bass line for measures 26-31. The notes are: 26: G2, A2, B2, C3; 27: D3, E3, F#3, G3; 28: A3, B3, C4, D4; 29: E4, F#4, G4, A4; 30: B4, C5, D5, E5; 31: F#5, G5, A5, B5; C6, B5, A5, G5.

32 B₇ E_M E_b6

Bass line for measure 32. The notes are: G2, A2, B2, C3; D3, E3, F#3, G3; A3, B3, C4, D4; E4, F#4, G4, A4; B4, C5, D5, E5; F#5, G5, A5, B5; C6, B5, A5, G5.

MINNIE THE MOOCHER

TROMBONE 1

CAB CALLOWAY

1

7

23

29

MINNIE THE MOOCHER

TROMBONE 2

CAB CALLOWAY

4

7

4 X's 8 SING: (REPEAT LEAD VOCAL)

23

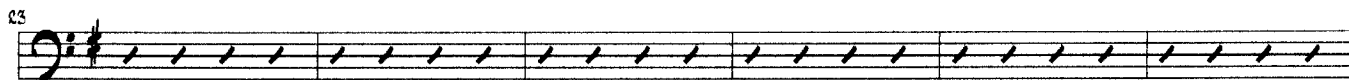
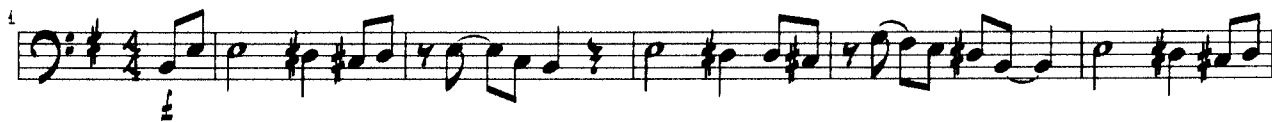
29

1-3. 4.

MINNIE THE MOOCHER

TROMBONE 3

CAB CALLOWAY



MINNIE THE MOOCHER

DRUMS

CAS CALLOWAY

1 SNARE

8 HI HAT

14 4 X's TIME-SIM.

20 DOUBLE X FEEL (3RD TIME ONLY)

27 REG. TIME (3RD TIME) 1-3. 4.

MINNIE THE MOOCHER

GUITAR

CAB CALLOWAY

1. Ew6 D#7 Ew6 Ew6 D#7 Ew6 Ew6 D#7 Ew6

8. Am7 Ew6B7 Ew6 C7 B7 Ew6 C7 B7 4 X's Ew6

15. C9 B7 Ew6 Ew6 DOUBLE X FEEL (3RD TIME ONLY) C9 B7 Ew6

22. REQ. TIME (3RD TIME)

29. 1.-3. 4. Em Em Cm B7 Em Ew6

MINNIE THE MOOCHER

PIANO

CAS CALLOWAY

1. Ew6 D#A7 Ew6 Ew6 D#A7 Ew6 Ew6 D#A7 Ew6

8. Aw7 Ew6B7 Ew6 C7 B7 Ew6 C7 B7 Ew6

15. C9 B7 Ew6 Ew6 C9 B7 Ew6

22. Ew6 REG. TIME (320 X)

29. 1.-5. 4. Ew6 Ew6 Cm B7 Ew6 Ew6

MINNIE THE MOOCHER

Musical score for "Minnie the Mocher" featuring various instruments and a rhythm section. The score is written in 4/4 time and includes the following parts:

- ALTO SAX 1
- ALTO SAX 2
- TENOR SAX 1
- TENOR SAX 2
- BARITONE SAX
- TRUMPET 1 (PLUNGER)
- TRUMPET 2
- TRUMPET 3
- TECHSONG 1
- TECHSONG 2
- TECHSONG 3
- QUARTZ
- PIANO
- BASS
- DRUMS (SNARE)

The score includes chord progressions and specific performance instructions such as "PLUNGER" and "SOLO (AROU)".

Chord Progression:

E _b 6	D ₉ 7	E _b 6	E _b 6	D ₉ 7	E _b 6	E _b 6	D ₉ 7	E _b 6	A ₇	E _b
------------------	------------------	------------------	------------------	------------------	------------------	------------------	------------------	------------------	----------------	----------------

4 X 6

ALTO SAX 1
 ALTO SAX 2
 TENOR SAX 1
 TENOR SAX 2
 BARITONE

Detailed description: This section contains five staves for saxophones. The top two staves are labeled ALTO SAX 1 and ALTO SAX 2. The next two are TENOR SAX 1 and TENOR SAX 2. The bottom staff is labeled BARITONE. All staves are in the key of F major and 4/4 time. The notation shows melodic lines with various articulations and dynamics markings.

4 X 6

TRUMPET 1
 TRUMPET 2
 TRUMPET 3
 TROMBONE 1
 TROMBONE 2
 TROMBONE 3

Detailed description: This section contains six staves for brass instruments. The top three staves are labeled TRUMPET 1, TRUMPET 2, and TRUMPET 3. The bottom three staves are labeled TROMBONE 1, TROMBONE 2, and TROMBONE 3. The notation shows various melodic and harmonic parts for the brass section.

4 X 6

DOUBLE X FEEL (320)

GUITAR
 C7 B7 E16
 C7 B7 E16 E16
 C7 B7 E16 E16

PIANO
 C7 B7 E16 E16
 C7 B7 E16 E16
 C7 B7 E16 E16
 C7 B7 E16 E16

BASS
 C7 B7 E16 E16

DRUMS
 TIMB-DM.
 DOUBLE X FEEL (320)

Detailed description: This section contains four staves for rhythm instruments. The top staff is GUITAR, showing chord voicings (E16, C7, B7, E16, C7, B7, E16, E16) and rhythmic notation. The next two staves are PIANO, with similar chord voicings and rhythmic notation. The bottom staff is BASS, showing a walking bass line with chord voicings (C7, B7, E16, E16). The drum staff at the bottom shows a pattern of eighth notes with 'x' marks for snare and 'o' marks for cymbals, labeled TIMB-DM. and DOUBLE X FEEL (320).

MINNIE THE MOOCHER -

1 - 5.

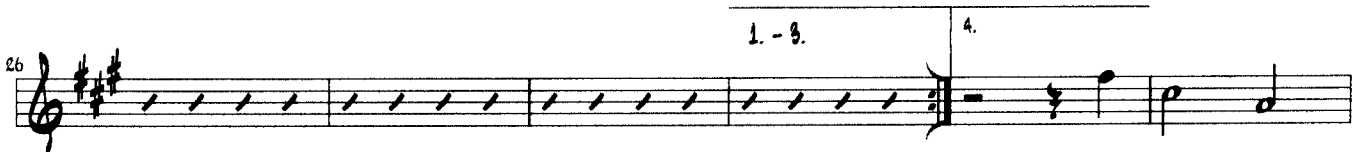
4.

Musical score for "Minnie the Mocher" featuring various instruments. The score is divided into two systems. The first system includes parts for Alto Sax 1 & 2, Tenor Sax 1 & 2, Soprano, Trumpet 1 & 2, Trombone 1 & 2, and Trombone 3. The second system includes parts for Guitar, Piano (Right and Left Hand), Bass, and Drums. The score includes first and second endings, marked with "1-5." and "4.". The guitar, piano, bass, and drums parts are marked with "REG. TIME (3RD TIME)". The saxophone and trumpet parts have specific notes and rests indicated. The piano part shows chords EN, EM, and CM. The bass part shows a rhythmic pattern of eighth notes. The drum part shows a simple rhythmic pattern.

MINNIE THE MOOCHER

TENOR SAX 1

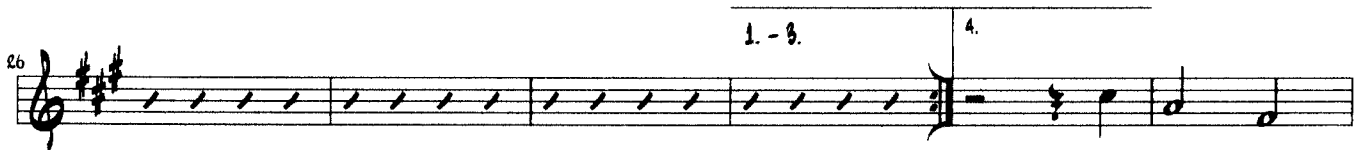
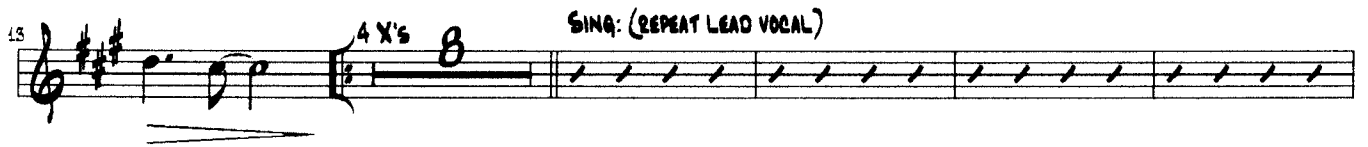
CAS CALLOWAY



MINNIE THE MOOCHER

TENOR SAX 2

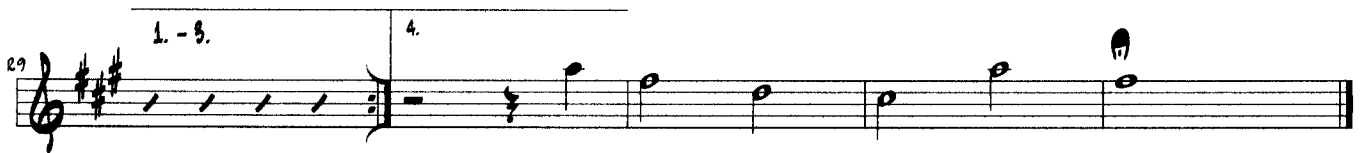
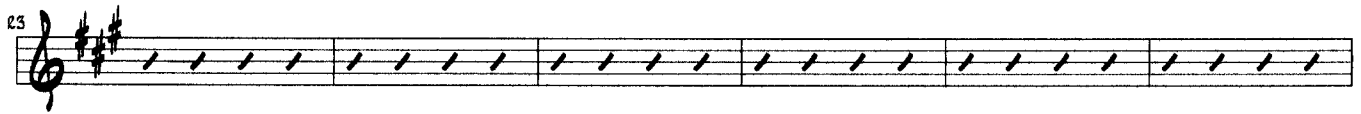
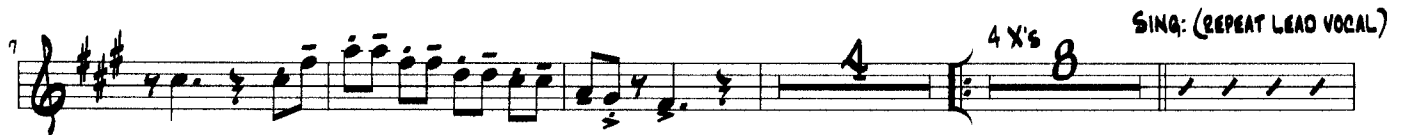
CAB CALLOWAY



MINNIE THE MOOCHER

TRUMPET 1

CAB CALLOWAY



MINNIE THE MOOCHER

TRUMPET 2

CAB CALLOWAY

1 PLUNGER: PLUNGER: SOLO: (GROWL)

13 4 X'S SOLO (BEHIND VOCAL) - TACET 1ST X
F#m6 D9 C#7 F#m6 F#m6

19 D9 C#7 F#m6 SING: (REPEAT LEAD VOCAL)

25 1. - 3. 4.

31

MINNIE THE MOOCHER

TRUMPET 3

CAB CALLOWAY

1

3

7

4 X's B SING: (REPEAT LEAD VOCAL)

23

29

1.-3. 4.