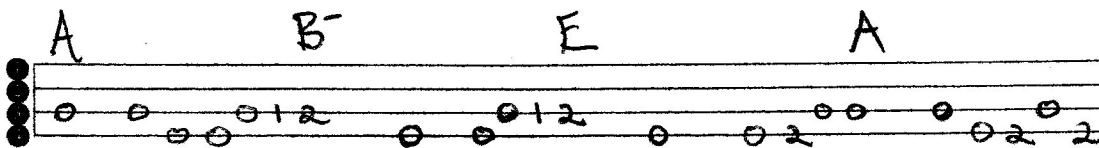
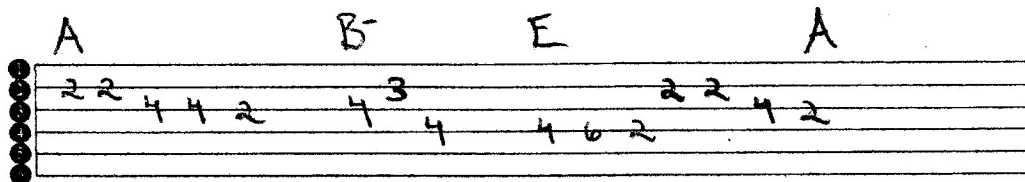
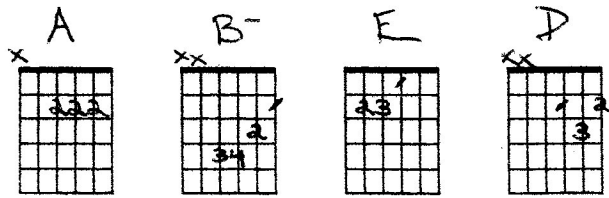


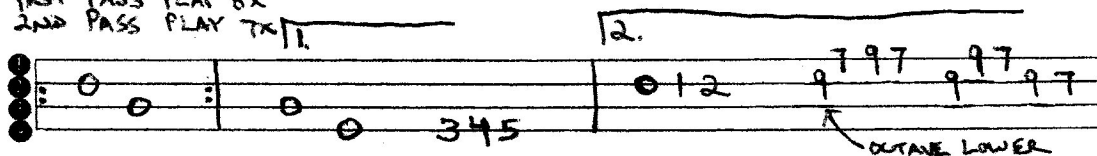
Scoby Doo



A B- E A
 SCOOBY DOOBIE DOO WHERE ARE YOU WE GOT SOME WORK TO DO NOW
 SCOOBY DOOBIE DOO WHERE ARE YOU WE NEED SOME HELP FROM YOU NOW
 COME ON SCOOBY DOO I SEE YOU PRETENDING YOU'VE GOT A SLIVER
 YOU'RE NOT FOOLING ME 'CAUSE I CAN SEE THE WAY YOU SHAKE + SHIVER

BRIDGE

1ST PASS PLAY 8X
 2ND PASS PLAY TX 11



D WE'VE GOT A MYSTERY TO SOLVE SO SCOOBY DOO BE READY FOR YOUR ACT DON'T HOLD BACK
 E D E