

WITHOUT YOU

Words and Music by
WILLIAM HAM and TOM EVANS



Slowly $\text{♩} = 66$



1. No. 1

(with pedal)

Verse 1:



can't for - get this eve - ning, or your face as you were leav - ing, but I



guess that's just the way the sto - ry goes. You al - ways

C#m E/B F#

smile, but in your eyes— your sor - row shows, yes, it

E(9) E E(9) A/B B7 A/B B7

shows. _____ 2. No, I

Verses 2 & 3:

E(9) E G#m9 G#m

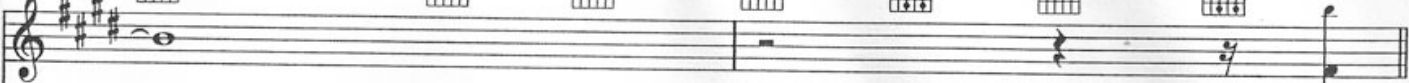
can't for - get— to - mor - row when I think of all— my sor - row, well, I
 can't for - get— this eve - ning, or your face as you— were leav - ing, but I

F#m9 F#m G#7

had you there, guess that's just but then I let you go.— And now— it's on -
 the way the sto - ry goes.— You al - ways smile, -



ly fair_ that I_ should let you know_ what you should know_
 but in_ your eyes_ your sor - row shows, yes, it shows.



} I can't



cresc.

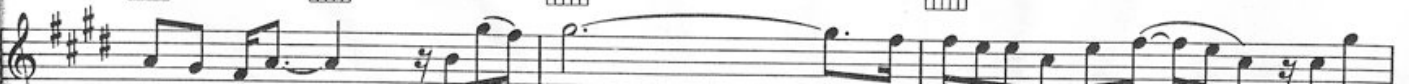
Chorus:



live if liv-ing is with-out you. I can't live, I can't



mf



give an - y - more. I can't. live if liv-ing is with-out you. I can't



F#m9

F#m

1.

A/B

B7

2.

A/B

B



a tempo

give,

I can't give an - y - more... 3. Well, I

give an - y - more,

a tempo

E

C#m



if liv - ing is with - out you.

F#m9

F#m

A/B

B

E



End on chord

Repeat ad lib. and fade

C#m

F#m9

F#m

A/B

B

