

II

9. Offertorium

Soli e Coro

Andante con moto ♩ = 69

Legni

dim. pp fz fz p

Red. *

pp mf

A CORO
Bassi

mf

Do - mi-ne Je - su

Tibni Cl Fg

mf fz pp

Red. *

f **B**

Chri-ste, Rex glo - ri-ae, Rex glo - ri-ae.

Archis

mp *3*

c. Red. *

ALTO SOLO

p

Do - mi - ne Je - - su Chri - ste, Rex glo - - ri -

cresc.

- ae, Rex glo - - ri - ae,

Tenori

Bassi

Rex glo - ri - ae

dim. *mp*

Red. *

CORO ALTI *p m v*

Do - mi - ne Je - su Chri - ste, Rex glo - ri - ae, Rex

Fl Cl.

p Ob.

f

Page 85

BASSO SOLO *C* *mf*

Do - mi - ne

glo - ri - ae,

p *pp* *3* *3* *Arpa*

Red.

Je - - su Chri - ste, Rex glo - - ri - ae, Rex

Red. *

glo - - ri - ae.

Soprani *mf*

Altī *mf*

Rex glo - ri - ae,

dim. *molto cresc.*

Red.

Page 86

CORO

f Soprani

Do - mi - ne Je - - su Chri - ste, Rex glo - - ri -

f Altī

Do - mi - ne Je - - su Chri - ste, Rex glo - ri -

f Tenori

Do - mi - ne Je - - su Chri - ste, Rex glo - ri -

Bassi

Cor

f

Legni

ff marc. *Archi*

c. Red. *3* *simile*

ae, Rex glo - - - ri - ae, Rex glo - - - ri - ae, Rex glo - ri -

ff *ff* *ff* *ff*

• Rex glo - ri -

Corn

ff

8

8

ped. *

ae, ae,

ff *p dim.*

ped.

Tenori *pp* *3*
 Bassi
 li-be-ra a - ni-mas,

Cor. *pp* *3* *3* *3* *3* *p* Cor

pp *3* *3* *3* *3* *p*

pp

Page 87

SOPRANO SOLO *D* *molto espressivo* *pm.v.* *3*
 Li - be-ra a - ni-mas om-nium fi-de - li-

pp *3*
 li-be-ra a - ni-mas,

pp *p* *Fl* *+Cl.* *Cor. ingl.*

f *fz* *fz*
 um de-fun-cto - rum de poe - nis in fer - ni et de pro-

p *fp* *fp* *fp*

f **SOPRANO SOLO** *p*
 fun - do la - cu.

ALTO SOLO *p sotto voce*
 Li - - be-ra

TENORE SOLO *p sotto voce*
 Li - - be-ra

CORO
 Tenori *p* *3*
 li-be-ra a - ni-mas,

Bassi

Cor 1.
fz *p* *fp* *3* *3*

Cor 2.

Trbni

Page 88

a - - ni-mas om - ni-um fi - de - - li -

a - - ni-mas om - ni-um fi - de - - li -

p *3*
 om-ni-um fi - de - li-um

li - be-ra a - ni-mas,

Viol
 Fl
 Ob
 Cl *p*

- um de - fun - cto - - rum, *p*
 - um de - fun - cto - - rum, *p*
 de - fun - cto - - rum, *p*
mf li - be - ra a - ni - mas fi - de - li - um de - fun - cto - - rum, *p*

f
pp *3* *3* *3* *3* *Red.*

Page 89

SOPRANO SOLO

p li - - be - ra a - - ni - mas
p li - - be - ra a - - ni - mas
p li - - be - ra a - - ni - mas
p li - be - ra a - ni - mas, *3*
p li - be - ra a - ni - mas, *3*

pp *3* *3* *3* *3* *3*

om - - ni - um fi - de - - li - um de - fun -

om - - ni - um fi - de - - li - um de - fun -

om - - ni - um fi - de - - li - um de - fun -

li - be - ra a - ni - mas om - ni - um fi - de - li - um,

li - be - ra a - ni - mas

f

f

f

p

mf

mf

mf

3 3 3 3

p *f* *3* **E**

cto - - rum, li-be-ra e - - as de o - re le -

cto - - rum, li-be-ra e - - as de o - re le -

cto - - rum, li-be-ra e - - as de o - re le -

f *3*

Li-be-ra e - - as de o - re le -

mf *3*

li-be-ra e-as,

mf *3*

li-be-ra e-as,

p

om-ni-um fi-de - li-um,

p *f* *p*

3 *3* *3*

f *ped.*

o - - nis, li-be-ra e - - as de o - - re le -

o - - nis, li-be-ra e - - as de o - - re le -

o - - nis, li-be-ra e - - as de o - - re le -

o - - nis, li-be-ra e - - as de o - - re le -

li-be-ra e - as,

li-be-ra e - as,

li-be-ra e - as,

H 2924

o - - nis, li-be-ra e - - as, li-be-ra e - - as,

o - - nis, li-be-ra e - - as, Do - - mi - ne

o - - nis, li-be-ra e - - as, Do - - mi - ne

o - - nis, li-be-ra e - - as, Do - - mi - ne

li-be-ra e - as,

li-be-ra e - as,

li-be-ra e - as,

H 2924

dim. *p*
Do - mi - ne Je - su Chri - - - ste,
dim. *p*
Je - - - su Chri - - - ste,
dim. *p*
Je - su Chri - - - ste,
dim. *p*
Je - - - su Chri - - - ste,

p *pp*
li-be-ra e - as, li-be-ra e - as,

p *pp*
Ob
Vla

Two vocal staves with lyrics: *pp* li-be-ra e - as, li-be-ra e - as, *pp*

Piano accompaniment for the first system, including a *Cor.* (Corno) part with *fz* dynamic.

SOPRANO SOLO *pp* *f* *pp*
 libera e - as de o - re le - o - nis, ne ab-

ALTO SOLO *pp* *f* *pp*
 libera e - as de o - re le - o - nis, ne ab-

TENORE SOLO *pp* *f* *pp*
 libera e - as de o - re le - o - nis, ne ab-

BASSO SOLO *pp* *f* *pp*
 libera e - as de o - re le - o - nis, ne ab-

Piano accompaniment for the second system, featuring triplets and dynamics *f*, *dim.*, and *pp*.

F

sor - be-at e - as tar - ta-rus, ne ab - sor - be-at e - as

sor - be-at e - as tar - ta-rus, ne ab - sor - be-at e - as

sor - be-at e - as tar - ta-rus, ne ab - sor - be-at e - as

sor - be-at e - as tar - ta-rus, ne ab - sor - be-at e - as

CORO
Sopran

ppp
ne ab - sor - be-at e - as tar - ta-rus, ne

ppp
ne ab - sor - be-at e - as tar - ta-rus, ne

ppp
ne ab - sor - be-at e - as tar - ta-rus, ne

ppp
ne ab - sor - be-at e - as tar - ta-rus, ne

3 3 3 3 3 3

3 3 3 3 3 3

f tar - ta-rus, *pp* ne ca - dant in ob - scu - rum,
f tar - ta-rus, *pp* ne ca - dant in ob - scu - rum,
f tar - ta-rus, *pp* ne ca - dant in ob - scu - rum,
f tar - ta-rus, *pp* ne ca - dant in ob - scu - rum,

mf ca - dant in ob - *ff* scu - rum, *pp* ne
mf ca - dant in ob - *ff* scu - rum, *pp* ne
mf ca - dant in ob - *ff* scu - rum, *pp* ne
mf ca - dant in ob - *ff* scu - rum, *pp* ne

mf *ff* *pp* Timp
 3

dim. *pp*
 ca - dant in ob - scu - rum, ne ca-dant in ob - scu - rum, in ob -
dim. *pp*
 ca - dant in ob - scu - rum, ne ca-dant in ob - scu - rum, in ob -
dim. *pp*
 ca - dant in ob - scu - rum, ne ca-dant in ob - scu - rum, in ob -
dim. *pp*
 ca - dant in ob - scu - rum, ne ca-dant in ob - scu - rum, in ob -

f *Co1* *dim.* *p*
 3 3 3 3 3 3 3 3

ppp
 scu - - rum.
ppp
 scu - - rum.
ppp
 scu - - rum *pp* *3* Li-be-ra
ppp *pp* *3* scu - - rum. Li-be-ra e - as, li-be-ra e - as,

ppp *3* *3*
 Ob
 Viol *pp*

SOPRANO SOLO

mf

G

Sed sig - ni-fer sanctus Mi-cha - el repraesen - tet

ALTO SOLO

mf

Sed sig - ni-fer sanctus Mi-cha - el repraesen - tet

TENORE SOLO

mf

Sed sig - ni-fer sanctus Mi-cha - el repraesen - tet

BASSO SOLO

mf

Sed sig - ni-fer sanctus Mi-cha - el repraesen - tet

e - as
Li-be-ia e - as,
Li-be-ia e - as,

Legni
p
Coi.
6

Page 96

Four vocal staves (Soprano, Alto, Tenor, Bass) with lyrics: e - as in lu - cem san - ctam, re - prae - sen - tet e - as in. Dynamics include *f*, *dim.*, and *p*.

Piano accompaniment for the second system, including vocal lines with lyrics: li - be - ra e - as, li - be - ra e - as, li - be - ra e - as, li - be - ra e - as. Dynamics include *mf*.

Piano accompaniment for the third system, including vocal lines with lyrics: li - be - ra e - as, li - be - ra e - as, li - be - ra e - as, li - be - ra e - as. Dynamics include *f*, *p*, and *dim.*

lu - - cem san - ctam, in lu - cem, in lu - - cem san -

lu - - cem san - ctam, in lu - cem, in lu - - cem san -

lu - - cem san - ctam, in lu - cem, in lu - - cem san -

lu - - cem san - ctam, in lu - cem, in lu - - cem san -

h-be-ra e - as, h-be-ra e - as, h be ra e as Sed

h-be-ra e - as, h-be-ra e - as, h-be-ra e - as Sed

h-be-ra e - as, h-be-ra e - as, h-be-ra e - as Sed

h-be-ra e - as, h-be-ra e - as, h-be-ra e - as Sed

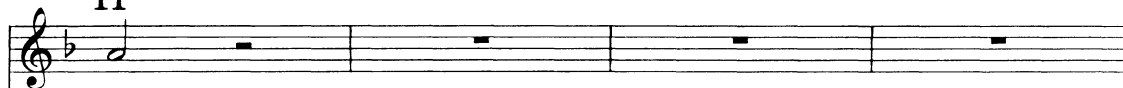
pp

f

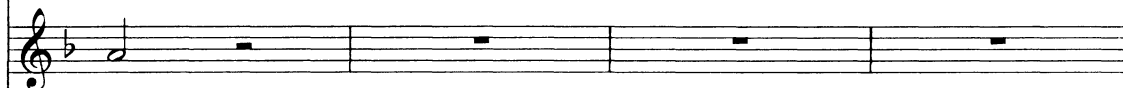
f

Page 97

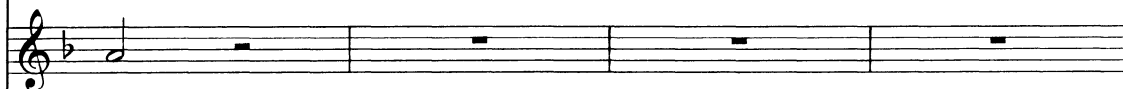
H



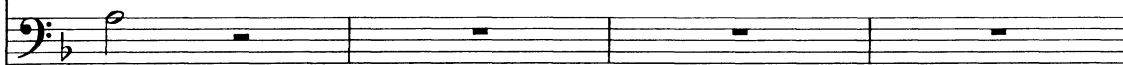
ctam.



ctam.



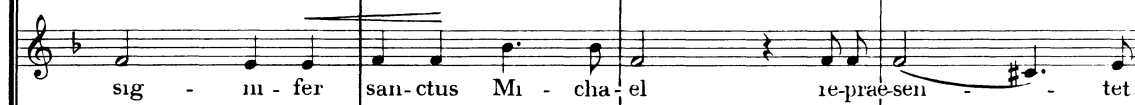
ctam.



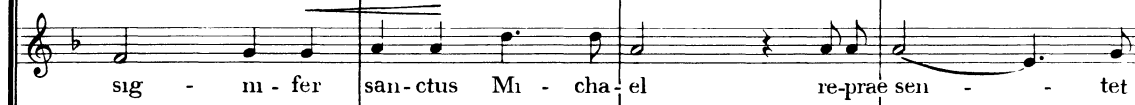
ctam.



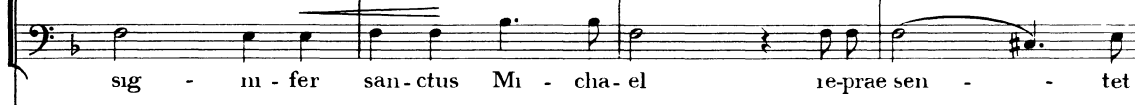
sig - ni - fer san - ctus Mi - cha - el re - praesen - - tet



sig - ni - fer san - ctus Mi - cha - el re - praesen - - tet



sig - ni - fer san - ctus Mi - cha - el re - praesen - - tet



sig - ni - fer san - ctus Mi - cha - el re - praesen - - tet



ff
e - as in lu - - - cem san - ctam,
e - as in lu - - - cem san - ctam,
e - as in lu - - - cem san - ctam, in lu-cem
e - as in lu - - - cem san - ctam, in lu-cem

tr 8tr 8tr

3 3 3 3 3

Detailed description: This block contains the musical score for page 128. It features four vocal staves and a piano accompaniment. The vocal parts are in a B-flat major key and 4/4 time. The lyrics are 'e - as in lu - - - cem san - ctam, in lu-cem'. The piano accompaniment includes triplets and trills. Dynamics include *ff* and *tr*.

Page 98

f > > > > *ff*
in lu-cem san - - ctam.
f > > > > *ff*
in lu-cem san - - ctam.
san - - - ctam.
san - - - ctam

ff 3 *ff*

Detailed description: This block contains the musical score for page 98. It features four vocal staves and a piano accompaniment. The vocal parts are in a B-flat major key and 4/4 time. The lyrics are 'in lu-cem san - - ctam.' and 'san - - - ctam.'. The piano accompaniment includes triplets and dynamics like *f*, *ff*, and *tr*.