

Crocodile Rock

Words & Music by Elton John & Bernie Taupin

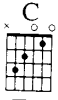
© Copyright 1972 for the world by Dick James Music Limited,
Chancellors House, Chancellors Road, London W6.
All Rights Reserved. International Copyright Secured.

Light-hearted rock

The piano introduction consists of two systems of music. The first system has a treble clef with a key signature of one sharp (F#) and a 4/4 time signature. The bass clef part starts with a whole note chord, followed by a series of eighth notes. The second system continues the bass line with eighth notes and adds a treble clef part with chords and eighth notes.

The first system of the first verse features a vocal line in the treble clef and piano accompaniment in the bass clef. The key signature remains one sharp (F#) and the time signature is 4/4. A guitar chord diagram for G major is shown above the vocal line. The lyrics are: "1,3. I re - mem - ber when rock was young_ (2) _ went by _ and".

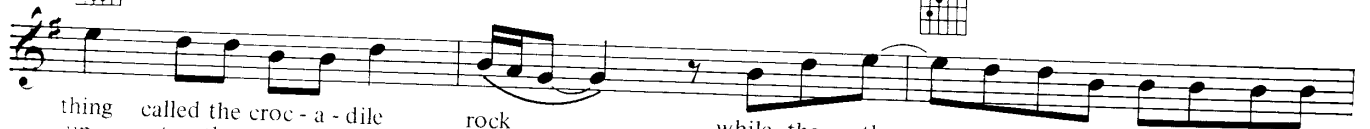
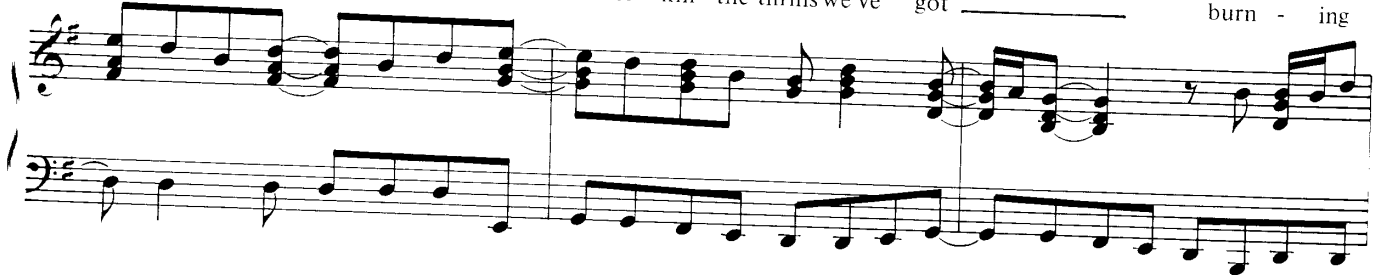
The second system of the first verse continues the vocal and piano accompaniment. A guitar chord diagram for Bm (B minor) is shown above the vocal line. The lyrics are: "rock just died Me and Su - sie had so much fun _ Hold-ing hands Su - sie went and left us for some for - eign guy. _ Long_".



and skim-min' stones Had an old gold Chev - y and a
 nights cry - in' by the rec - cord ma - chine dream - in' of my Chev - y and my



place of my own But the big - est kick I ev - er got
 old blue jeans But they'll nev - er kill the thrills we've got was do-in' a
 burn - ing



thing called the croc - a - dile rock while the oth - er kids were rock-in' round the
 up to the croc - a - dile rock learn - ing fast till the weeks went past



clock We were hop - pin' and bop - pin' to the croc - a - dile rock, Well
 We real - ly thought the croc - o - dile rock would last, Well





Croc-o-dile rock - in' is some-thing shock - in' when your feet just can't keep still, _____



I nev-er knew me a bet-ter time_ and I guess _____ I nev - er _____ will _____ Oh



_____ Lawd-y ma-ma those Fri - day nights _____ when Su - sie wore _____ her dres-ses tight _____ and



the croc-o-dile _____ rock-in' was _____ out of sight. _____



Musical notation for the first system, including a treble clef staff with a whole rest, a grand staff with piano accompaniment, and a bass clef staff with a whole rest.



Musical notation for the second system, including a treble clef staff with a whole rest, a grand staff with piano accompaniment, and a bass clef staff with a whole rest.

Oh

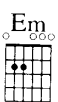
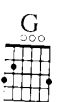
Musical notation for the third system, including a treble clef staff with a whole rest, a grand staff with piano accompaniment, and a bass clef staff with a whole rest.

2. But the years

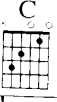
3. I re - mem-

Musical notation for the fourth system, including a treble clef staff with a whole rest, a grand staff with piano accompaniment, and a bass clef staff with a whole rest.

and



Musical notation for the fifth system, including a treble clef staff with a whole rest, a grand staff with piano accompaniment, and a bass clef staff with a whole rest.



Musical notation for the sixth system, including a treble clef staff with a whole rest, a grand staff with piano accompaniment, and a bass clef staff with a whole rest.

Repeat and fade

Musical notation for the seventh system, including a treble clef staff with a whole rest, a grand staff with piano accompaniment, and a bass clef staff with a whole rest.