

Written In The Stars

Words & Music by Andreas Carlsson, Nick Jarl & David Stenmarck

♩ = 132

F#m

E⁶

D

A

Musical notation for the first system. It features a guitar part with a treble clef and a key signature of three sharps (F#, C#, G#). The guitar part consists of four measures, each with a whole note chord: F#m, E⁶, D, and A. Above the guitar part are guitar chord diagrams for each chord. Below the guitar part is a piano accompaniment with a grand staff (treble and bass clefs) and a 4/4 time signature. The piano part includes a vocal line with the lyrics "Ah," and a bass line with eighth and quarter notes.

F#m

E⁶

D

A

Musical notation for the second system, identical in structure to the first. It features a guitar part with a treble clef and a key signature of three sharps (F#, C#, G#). The guitar part consists of four measures, each with a whole note chord: F#m, E⁶, D, and A. Above the guitar part are guitar chord diagrams for each chord. Below the guitar part is a piano accompaniment with a grand staff (treble and bass clefs) and a 4/4 time signature. The piano part includes a vocal line with the lyrics "ah," and a bass line with eighth and quarter notes.

F#m

E⁶

D

A

Musical notation for the third system. It features a guitar part with a treble clef and a key signature of three sharps (F#, C#, G#). The guitar part consists of four measures, each with a whole note chord: F#m, E⁶, D, and A. Above the guitar part are guitar chord diagrams for each chord. Below the guitar part is a piano accompaniment with a grand staff (treble and bass clefs) and a 4/4 time signature. The piano part includes a vocal line with the lyrics "1. Stay with me, don't fall a - sleep_ too soon. The" and a bass line with eighth and quarter notes.

Bm

E

Dadd9

A



an - gels_ can wait_ for a mo - ment.



F#m

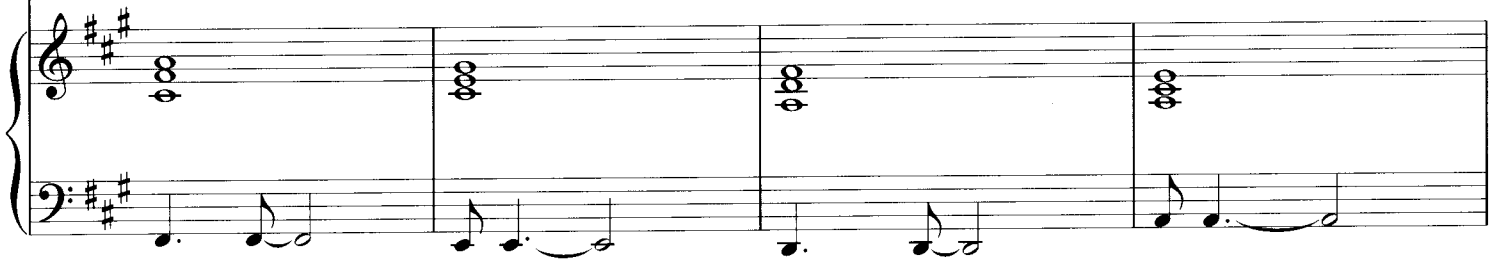
E6

D

A



Come real close, for - get the world out - side, to -



Bm

E

D

E

A



night we're a - lone, it's fi - nal - ly you_ and I._



F#m

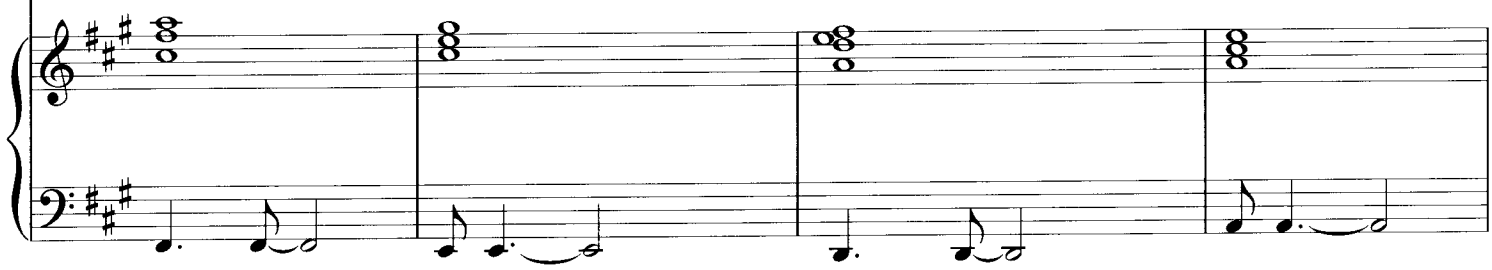
E6

Dadd9

A



It was - n't meant to feel_ like_ this, _



F#m

E6

Dadd9

E



Musical staff with treble clef and key signature of two sharps (F# and C#). The melody begins with a whole rest, followed by a quarter note G4, an eighth note A4, a quarter note B4, and a quarter note C5. This is followed by a quarter rest, then a quarter note G4, an eighth note A4, a quarter note B4, and a quarter note C5. The staff ends with a double bar line.

not with - out you. 'Cause when I

Piano accompaniment for the first system. The right hand plays chords: F#m (two notes), E6 (two notes), Dadd9 (two notes), and E (two notes). The left hand plays a bass line with quarter notes: G2, A2, B2, C3, G2, A2, B2, C3.

A

E/G#

F#m



Musical staff with treble clef and key signature of two sharps. The melody begins with a quarter note G4, an eighth note A4, a quarter note B4, and a quarter note C5. This is followed by a quarter rest, then a quarter note G4, an eighth note A4, a quarter note B4, and a quarter note C5. The staff ends with a double bar line.

look at my life how the pie - ces fall in - to place.

Piano accompaniment for the second system. The right hand plays chords: A (two notes), E/G# (two notes), and F#m (two notes). The left hand plays a bass line with quarter notes: G2, A2, B2, C3, G2, A2, B2, C3.

Dadd9

A

E

Dadd9



Musical staff with treble clef and key signature of two sharps. The melody begins with a quarter rest, then a quarter note G4, an eighth note A4, a quarter note B4, and a quarter note C5. This is followed by a quarter rest, then a quarter note G4, an eighth note A4, a quarter note B4, and a quarter note C5. The staff ends with a double bar line.

It just was - n't right with - out you.

Piano accompaniment for the third system. The right hand plays chords: Dadd9 (two notes), A (two notes), E (two notes), and Dadd9 (two notes). The left hand plays a bass line with quarter notes: G2, A2, B2, C3, G2, A2, B2, C3.

E

A

E/G#



Musical staff with treble clef and key signature of two sharps. The melody begins with a quarter rest, then a quarter note G4, an eighth note A4, a quarter note B4, and a quarter note C5. This is followed by a quarter rest, then a quarter note G4, an eighth note A4, a quarter note B4, and a quarter note C5. The staff ends with a double bar line.

When I see how my path seemed to

Piano accompaniment for the fourth system. The right hand plays chords: E (two notes), A (two notes), and E/G# (two notes). The left hand plays a bass line with quarter notes: G2, A2, B2, C3, G2, A2, B2, C3.

F#m **Dadd9** **A** **E G#**

end up be - fore your face, the state of my heart, the

F#m **D** **Dadd9** **E** **To Coda** **A**

place where we are was writ - ten in the stars.

F#m **E6** **D**

2. Don't be a - fraid I'll be right by your side..

A **Bm** **E**

Through the laugh - ter and pain, to -

D
E
A
F#m
E6

-geth - er we're bound to fly. ————— I was - n't

Dadd9
A
D
Esus4
D.%. al Coda

meant to love_ like_ this, ————— not with - out_ you. ————— 'Cause when I

♣ Coda
Dadd9
F#m

I've made a few mis - takes, yeah,

D
B/D#
E
C# / E#
F#m

like some - times we do, ————— been through lot of heart - ache.

D

Bm⁷

Esus⁴

E



But I made it back_ to you._____ 'Cause when I

B

F[#]/A[#]

G[#]m



look at_ my life_ how the pie - ces fall in - to place._

Eadd9

B

F[#]



It just was - n't right_ with - out_

Eadd9

F[#]

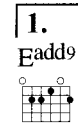
B



you._____ When I see how_ my path_



seemed to end up be - fore your face, the



state of my heart, the place where we are was writ - ten in the stars



writ - ten in the stars. The state of my heart, the



place where we are was writ - ten in the stars.

rall.