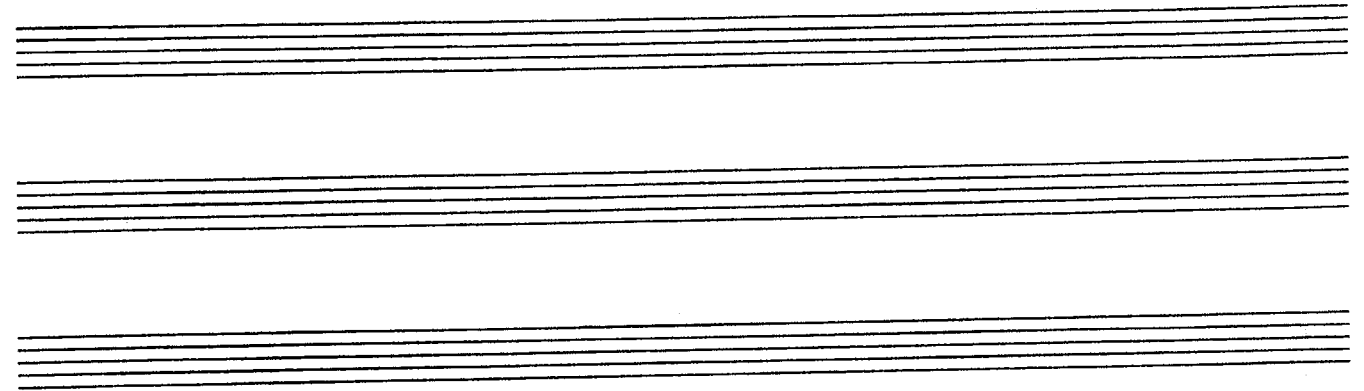


FINALE B



CONDUCTED

1 Mimi 2 Roger Mimi 3 ON CUE Mimi 4

I JUMPED OVER THE MOON! WHAT? A LEAP OF MOOD... I WAS IN A TUNNEL, HEADING FOR THIS SHE'S BACK! WARM WHITE LIGHT

*f* *mp*

5 ON CUE Maureen Mimi 6 7 8

OH MY GOD! AND I SWEAR ANGEL WAS THERE AND SHE LOOKED GOOD!

*mp*

9 10 ON CUE 11 ON CUE 12 Collins 13 ON CUE Maureen

AND SHE SAID "TURN AROUND GIRLFRIEND AND LISTEN TO THAT BOY'S SONG" SHE'S DRENCHED HER FE-VER'S BREAK-ING

14

Mark

15 16 17

THERE IS NO FU- TURE THERE IS NO PAST

PIANO TUBULAR BELLS

18

Roger

19 20 21

THANK GOD THIS MO- MENT'S NOT THE LAST

PIANO

22

Mimi & Roger

23 24 25

THERE'S ON- LY US THERE'S ON- LY

+DR XI XI

26

27 28 29

THIS FOR- GET RE- GRET OR LIFE IS YOURS TO

P/C

- 3 -

FINALE B

30 Mimi & Roger All

MISS NO OTH- ER ROAD NO OTH- ER

34 WAY NO DAY BUT TO-DAY

35 36 37

38

Women

I CAN'T CON- TROL

Men

WILL I LOSE MY DIG- NI- TY

f D A

GTR/EBS

42 Women  
 43 44 45  
 MY DES - TI - NY  
 Men  
 WILL SOME - ONE CARE  
 D A

46 47 48 49  
 I TRUST MY SOUL MY ON - LY  
 WILL I WAKE TO - MOR - ROW FROM  
 D A

50 51 52 53  
 GOAL IS JUST TO BE WITH -  
 THIS NIGHT - MARE  
 B C#

54

Women

Musical notation for Women's part, measures 54-57. Lyrics: OUT YOU \_\_\_\_\_ THE HAND GROPEs \_\_\_\_\_ THE

Men

Musical notation for Men's part, measures 54-57. Lyrics: THERE'S ON - LY NOW THERE'S ON - LY

Piano accompaniment for measures 54-57. Chords: F#

Musical notation for Women's part, measures 58-61. Lyrics: EAR HEARS \_\_\_\_\_ THE PULSE BEATS \_\_\_\_\_ LIFE

Musical notation for Men's part, measures 58-61. Lyrics: HERE GIVE IN TO LOVE OR LIVE \_\_\_\_\_ IN

Piano accompaniment for measures 58-61. Chords: D#m, C#/E#, B, C#

Musical notation for Women's part, measures 62-65. Lyrics: GOES ON \_\_\_\_\_ BUT I'M GONE \_\_\_\_\_ 'CAUSE

Musical notation for Men's part, measures 62-65. Lyrics: FEAR NO OTH - ER PATH NO OTH - ER

Piano accompaniment for measures 62-65. Chords: F#

66 Women  
 I DIE WITH-OUT YOU  
 67  
 68  
 69

Men  
 WAY NO DAY BUT TO-DAY

*mf* D<sup>#</sup>m 2 C<sup>#</sup>/E<sup>#</sup> 2 F<sup>#</sup>sus F<sup>#</sup>

70  
 I DIE WITH-OUT YOU  
 71  
 72  
 73

NO DAY BUT TO-DAY

B/D<sup>#</sup> C<sup>#</sup>/E<sup>#</sup> F<sup>#</sup>sus

74  
 I DIE WITH-OUT YOU  
 75  
 76  
 77

NO DAY BUT TO-DAY

B/D<sup>#</sup> C<sup>#</sup>/E<sup>#</sup> F<sup>#</sup>sus

78 Women  
I DIE WITH-OUT YOU

Men  
NO DAY BUT TO-DAY

B/D# C#/E# F#5/5

(B2) 82  
I DIE WITH-OUT YOU

NO DAY BUT TO-DAY

86  
I DIE WITH-OUT YOU

NO DAY BUT TO-DAY

34

90 Women  
 91  
 92 NO DAY BUT TO -

Men  
 NO DAY BUT TO -

93 DAY  
 94  
 95 DAY

96  
 97  
 98  
 99

ova - - - - -  
 rit...  
 366

370