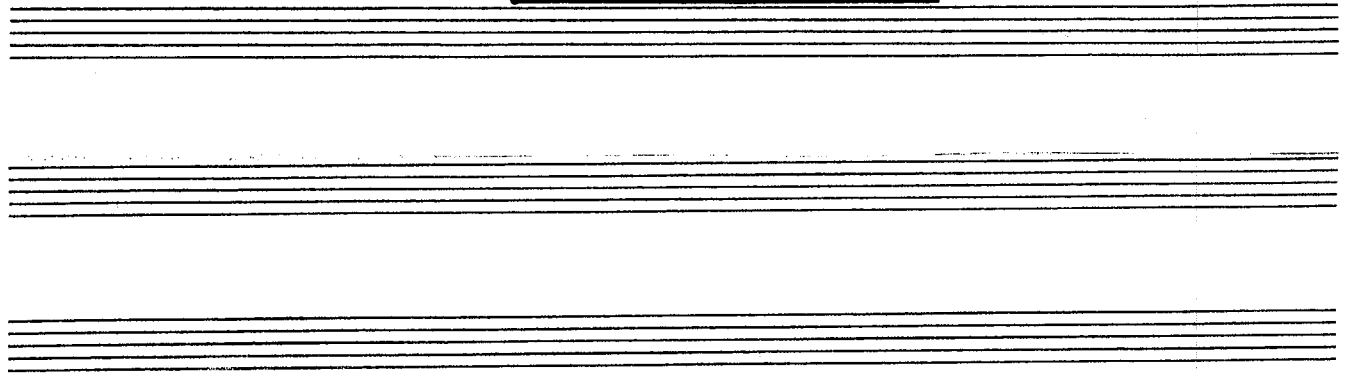


PIANO-CONDUCTOR

LIGHT MY CANDLE

RENT

8



1. 2

SYNTH BREATHY PAD

Chords: Eb, Cm, Eb, Cm

3 Roger 4 Mimi 5 Roger 6

WHAT'D YOU FOR-GET? GOT A LIGHT? I KNOW YOU! YOU'RE YOU'RE SHIV-ER-ING

Chords: Eb, Cm, Eb

7 Mimi 8 9 10

IT'S NO-THING THEY TURNED OFF MY HEAT AND I'M JUST A LIT-TLE WEAK ON MY FEET.

Chords: Ab, Bb, Ab, Bb

42

11 Mimi

12

13

14

WOULD YOU LIGHT MY CAN - DLE ? WHAT ARE YOU STAR-ING AT?

Gm A^b2(no3) Gm Bb

15 Roger

16

17

18

NO-THING. YOUR HAIR IN THE MOON-LIGHT YOU LOOK FA-MIL-I-AR

E^b C_m

19

20

21

Mimi

CAN YOU MAKE IT? JUST HAVE-N'T EAT-EN

Bb Ab

22

23

24

MUCH TO-DAY AT LEAST THE ROOM STOPPED SPIN-NING. AN-Y-WAY WHAT?

Bb Ab Bb

P/C

LIGHT MY CANDLE

(25)

Roger

Mimi

26

27

NO-THING

YOUR SMILE RE-MIND-ED ME OF_

I AL-WAYS RE-MIND_ PEO-PL E OF_

28

Roger 29

30

Mimi

WHO IS_ SHE?

SHE DIED.

HER NAME WAS AP-RIL

IT'S OUT A- GAIN.

31

32

33

34

SOR-RY'BOUT YOUR FRIEND

WOULD YOU LIGHT MY

CAN - DLE?_

35

36

Roger 37

Mimi

38

Roger

WELL_

YEAH, OW_

OH_

THE

WAX

P/C

LIGHT MY CANDLE

39 Roger 40 Mimi 41 42 Roger

IT'S DRIP-PING I LIKE IT BE-TWEEN MY FIN-GERS I FIG-URED

Bb

43 44 45 46 47 (knocks)

OH WELL, GOOD-NIGHT.

Bb Eb (Dr. Solo)

48

49 Mimi 50

IT BLEW OUT A-GAIN NO, I THINK THAT I DROPPED MY STASH

Eb + Bass Cm

51 Roger 52 53

I KNOW I'VE SEEN YOU OUT AND A-BOUT WHEN I USED TO GO OUT

Eb Cm

P/C

LIGHT MY CANDLE

54

Roger

55

Mimi

56

YOUR CAN-DLES OUT

I'M ILL-IN' I HAD IT WHEN I WALKED IN THE DOOR

57

IT WAS PURE —

58

IS IT ON THE FLOOR?

59

Roger

60 Mimi

61

THE FLOOR?

THEY SAY THAT I HAVE — THE BEST ASS

BE-LOW FOUR - TEENTH

62

— STREET

63

Roger

Mimi 64

Roger

IS IT TRUE? —

WHAT?

YOU'RE STAR-ING A - GAIN

OH

NO —

P/C

LIGHT MY CANDLE

65 Roger 66

I MEAN YOU DO — HAVE A NICE... I MEAN..

piano

67 Mimi 68 Roger 69

YOU LOOK FA-MIL-IAR LIKE YOUR DEAD GIRL-FRIEND? ON-LY WHEN YOU SMILED. BUT I'M

70 Mimi 71 72 73

SURE I'VE SEEN YOU SOME-WHERE ELSE DO YOU GO TO THE CAT SCRATCH CLUB? THAT'S WHERE I WORK I

74 Roger 75 76 Mimi

DANCE HELP ME LOOK YES! THEY USED TO TIE YOU UP IT'S A LIV-ING

ANVIL

P/C

LIGHT MY CANDLE

77 Roger 78

I DID-N'T RE - COG - NIZE YOU WITH - OUT THE HAND - CUFFS

Ab Bb ANVIL

79 Mimi 80 81 82

WE COULD LIGHT THE CAN - DLE OH

+GUITAR Gm Ab2 (No 3) Gm Bb

83 84 85 86

WON'T YOU LIGHT THE CAN - DLE

Gm Ab2 (No 3) Bb

87 Roger + SYNTH. 88 89 90 Mimi

WHY DON'T YOU FOR - GET THAT STUFF YOU LOOK LIKE YOU'RE SIX - TEEN I'M NINE - TEEN BUT I'M

Eb Cm

P/C

LIGHT MY CANDLE

91 Mimi 92 93 Roger 94

OLD FOR MY AGE I'M JUST BORN TO BE BAD. I ONCE WAS BORN TO BE BAD.

95 Roger 96 Mimi 97 Mimi 98

I USED TO SHIV-ER LIKE THAT. I HAVE NO HEAT I TOLD YOU. I USED TO SWEAT I GOT A COLD. UH-HUH I USED TO BE A

99 Roger 100 Mimi 101 Mimi

JUN-KIE BUT NOW AND THEN I LIKE TO.. FEEL GOOD. WHAT'S THAT? UH - HUH. HERE IT.. UM..

102 Roger 103 Mimi 104 105

CANDY BAR WRAP-PER WE COULD LIGHT THE CAN - DLE

P/C

LIGHT MY CANDLE

106 Mimi 107 108

OH WHAD' YOU DO... TO MY CAN - DLE?

109 110

111 Roger 112 113 Mimi 114

THAT WAS MY LAST MATCH OUR EYES 'LL AD-JUST THANK GOD FOR THE MOON

115 Roger 116 117 118 Mimi

MAY-BE IT'S NOT THE MOON AT ALL I HEAR SPIKE LEE'S SHOOTING DOWN THE STREET BAH HUM-BUG

LIGHT MY CANDLE

P/C

119 120 Mimi 121 Roger 122 Mimi 123 Roger

BAH HUM-BUG COLD HANDS YOURS TOO BIG.

Chords: Eb, Cm, Ab, Bb, Ab

124 125 126 Mimi 127 Roger

LIKE MY FA-THER'S YOU WAN-NA DANCE? WITH YOU? NO

Chords: Bb, Ab

128 129 130 Mimi

WITH MY FA-THER I'M RO-GER THEY CALL ME

Chords: Bb, Bb, Eb, Cm

+ PIANO

131 132 133 134

THEY CALL ME MI - MI.

Chords: Eb, Cm, Eb