

BEAUTIFUL

from Christina Aguilera's STRIPPED

Words and Music by
LINDA PERRY

Gentle Ballad (♩ = 78)

Chord diagrams: Eb, Eb7/D♭, Cm7, Abm6/C♭

Chord diagrams: Eb, Eb7/D♭, Cm7, Abm6/C♭

Chord diagrams: Eb, Eb7/D♭, Cm7

Ev-'ry-day _____ is so won - der-ful, _____ then sud-den - ly, _____ it's hard to breathe. _

Chord diagrams: Abm6/C♭, Eb, Eb7/D♭

Now and then _____ I get in - se-cure, _____ from all the pain, _

Cm7



A♭m6/C♭



A♭



I'm so a - shamed. I am beau - ti - ful no
You are beau - ti - ful no



Fm7



E♭



E♭/D♭



Cm7



mat - ter what they say - Words can't bring me down -
mat - ter what they say - Words can't bring you down -



A♭



Fm7



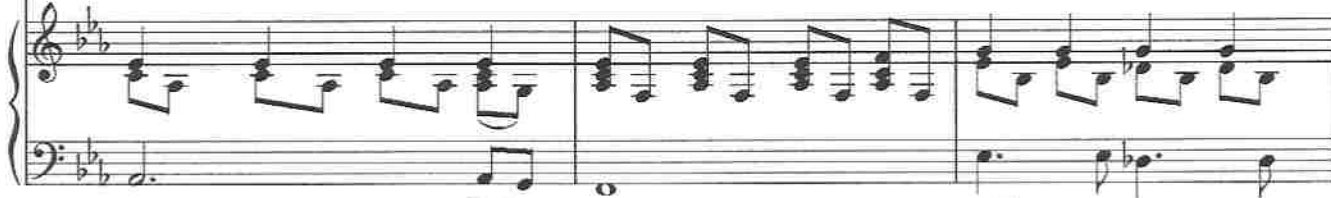
E♭



E♭/D♭



I am beau - ti - ful in ev - ry sin - gle way - Yes words can't bring me down -
'Cause you are beau - ti - ful in ev - ry sin - gle way - Yes words can't bring you down -



Cm7



Fm7

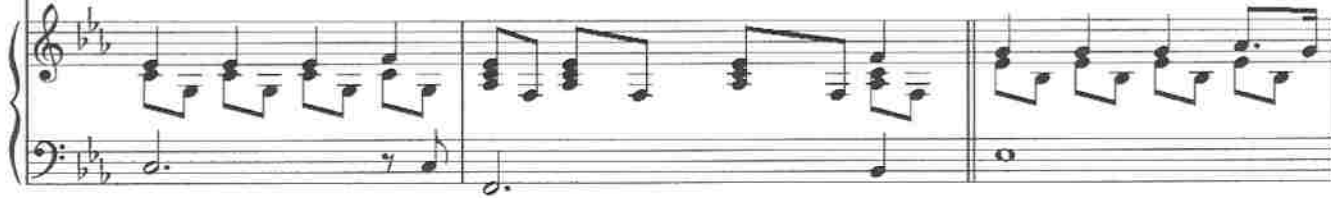


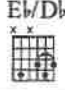
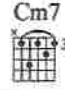

To Coda


E♭



So don't you bring me down to - day.
So don't you bring me down to - day.



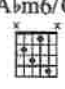
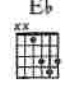







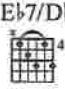
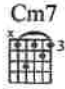

To all your friends — you're de - lir - i-ous So con - sumed — in all your —



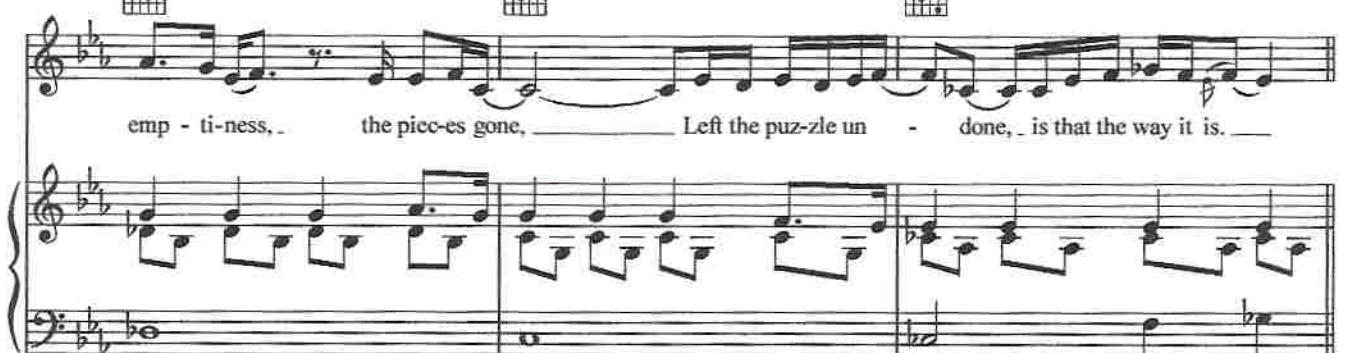
— doom — Try - ing hard — to fill the

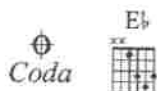


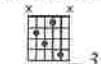
emp - ti-ness, the picc-es gone, Left the puz-zle un - done, is that the way it is. —

D.S. al Coda



Eb/D \flat 

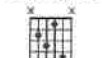
No mat - ter what we do, _____ No mat - ter what we say, _____


A \flat m6/C \flat 

mat - ter what we say _____ Yeah _____ Oh, _____
 We're the song in - side the tune, _____ full of beau - ti - ful mis - takes


Eb/D \flat 

And ev - 'ry - where we go, _____ the sun will al - ways shine.


A \flat m6/C \flat 

the Sun will al - ways al - ways shine.
 And to - mor - row we might a - wake _____ on the oth - er side.





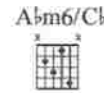
'Cause we are beau-ti-ful — no mat-ter what . they say . Yes words won't bring us — down, —



We are beau-ti-ful — in ev-'ry sin - gle way . Yes



words can't bring us down — So don't you bring me down — to-



day. Don't you bring me down . to -

6

E \flat



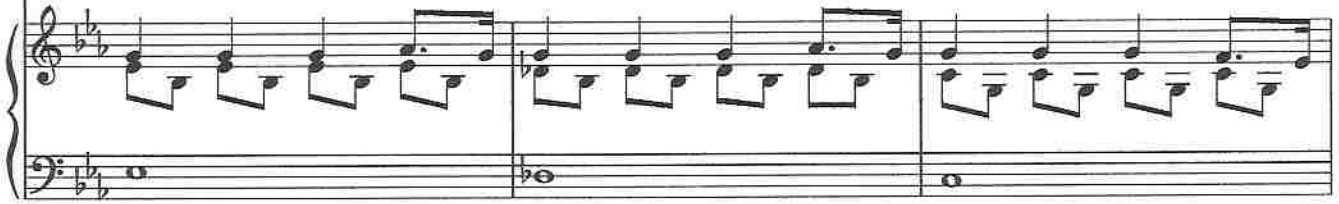
E \flat 7/D \flat



Cm7



day.



A \flat m6/C \flat



E \flat



Don't you bring me down - mm - hmm to - day.

