

# IF I NEVER KNEW YOU

(Love Theme from POCAHONTAS)

from Walt Disney's POCAHONTAS

Music by ALAN MENKEN  
Lyrics by STEPHEN SCHWARTZ

Moderately slow

Chord diagrams: D/C, C, D/C, C, D/E, Em, D/E

*mf*  
With pedal

Chord diagrams: Em, Fmaj9#11, F, Dm11

Chord diagrams: G, Em, G

*a tempo*

Chord diagrams: Em, G, Em

Male: If I nev - er knew you, —

G Em C

if I nev - er felt \_\_\_ this love, \_ I would have no ink -

Am7 C D7sus

ling of \_\_\_ how pre - cious life can be.

C G D G E G

G Em G

And if I nev - er held you, I would nev - er have -

A E C C G D G E G D

Em7 E7/G# Am(add9) Cm(maj7) Cm6

\_\_\_ a clue \_\_\_ how, at last, \_\_\_ I'd find in you

G# E B A E C C G C

Em9

Bm/D

C

Am6(add2)

the miss - ing part

of me. \_\_\_\_\_

In this world so

Cmaj7/D

D9

Am6(add2)

Cmaj7/D

D9

full of fear, \_

full of rage and lies,

Bm7

B7/D#

Em11

Em7

C

I can see \_

the truth \_ so clear \_

in your eyes, \_ so

D

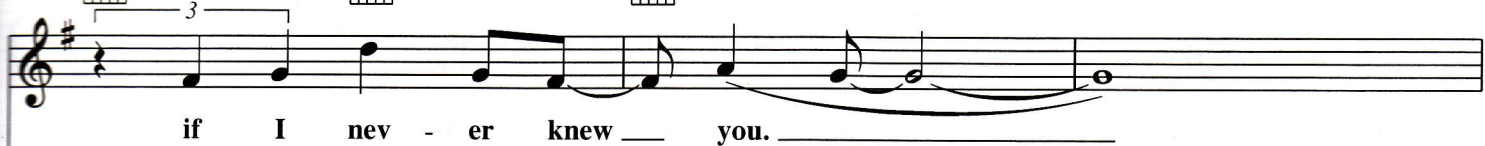
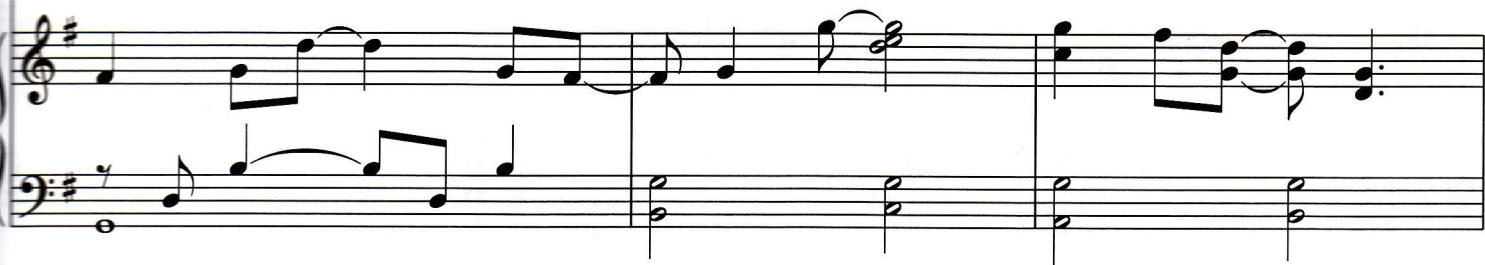
C/D

G

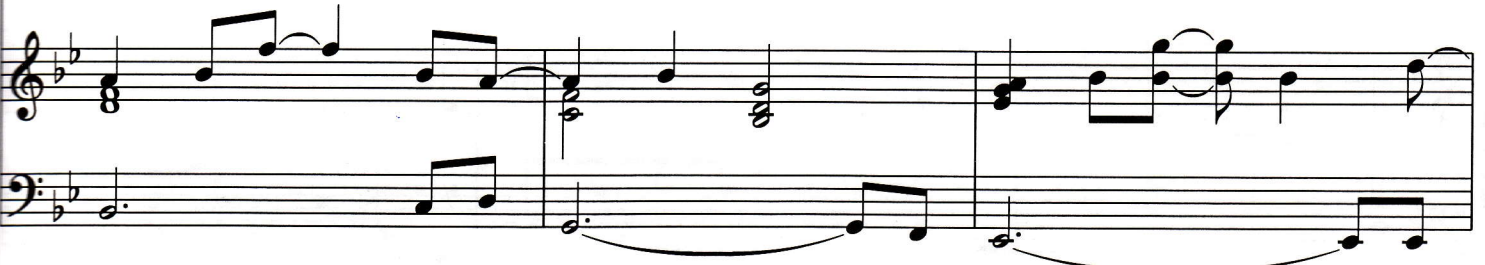
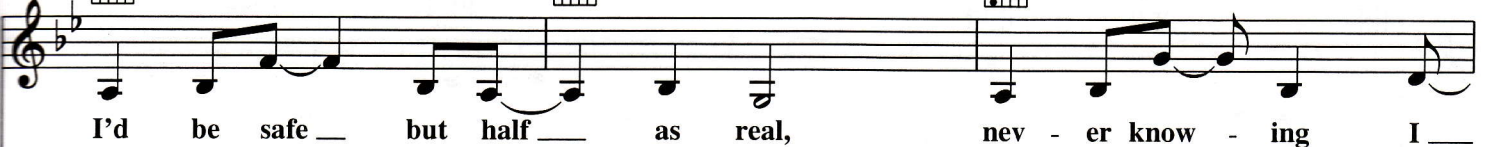
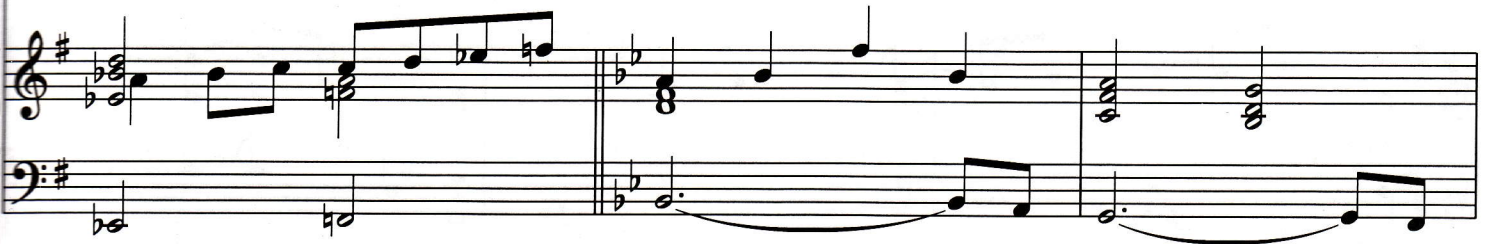
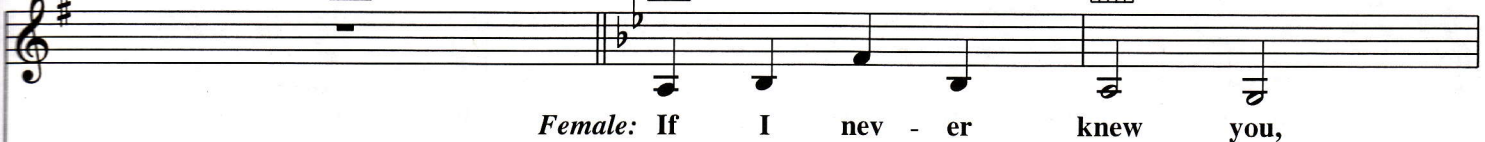
Em

dry your eyes. \_

And I'm so grate - ful to you.



E $\flat$  maj7(no3rd)



Bb/C

Cm

Eb

F7sus

could feel a love so strong and true.

Bb

Gm

Bb

I'm so grate - ful to you. I'd have lived my whole -

Bb/D

Eb

Cm7

Bb/D

Eb

Eb/F

life through, lost for - ev - er if I nev - er knew

F/Eb

Eb maj7

F/Eb

Eb

F/Eb

Male: I thought our love would be so beau - ti - ful.  
you.

Dm7

F/G

Gm7

F/G

Musical staff with guitar chords and melody.

Female: Some - how we'd make the whole world \_ bright. \_ Both: I nev - er knew that fear and

Musical staff with guitar chords and melody.

E♭maj7

B♭/D

Gm

Dm7

E♭

Musical staff with guitar chords and melody.

hate could be so strong, all they'd leave us were these whis-pers in the night, \_ but

Musical staff with guitar chords and melody.

Cm9

Dm7

E♭

E♭/F

F/G

Musical staff with guitar chords and melody.

still my heart is say - ing we were right. \_ Female: Oh. \_

Musical staff with guitar chords and melody.

C

Am

C

Musical staff with guitar chords and melody.

If I nev - er knew no mo - ment I re - gret \_ if I nev - er knew \_

Musical staff with guitar chords and melody.



since the mo - ment that we met. — If our time has  
 — this love, — I would have — no ink - ling - of — how



gone too fast — I've lived — at last. —  
 pre - cious life — can be. —



*Both:* I thought our love would be so



beau - ti - ful, some - how we'd make the whole world —

G/F                      Fmaj7                      G/F                      F

bright. \_\_\_\_\_ *Female:* I thought our love would be so

Em7                      G/A                      C/G

beau - ti - ful, we'd turn the dark-ness in - to \_\_\_\_\_ light. \_\_\_\_\_ *Both:* And

Dm7                      Em7                      F                      Ebm7/Ab

still my heart is say-ing we were right. \_\_\_\_\_ *Male:* We were right. And

Db                      Bbm                      Db

if I nev - er knew \_\_\_\_\_ you, *Female:* If I nev - er knew \_\_\_\_\_ you, I'd have lived my



Fm7      Gbmaj7      Ebm7      Fm7      Gb(add9)

whole life through *Female:* emp - ty as the sky,

Both: nev - er know - ing why, lost for - ev - er

Freely

Ebm7      Fm7      Gbmaj7      Bbm7      Db/F

*rit.*

if I nev - er knew you.

Gb      Ab7sus      Ab7      Db      Bbm

*a tempo*

Gb      Ab7      Db(add9)

*rit.*