

INCEPTION

FROM "INCEPTION"
IMP 12202

(C MINOR BLUES)

MC COY TYNER

TRASCritto DA R. SOGGETTI

Chords: $D\flat 7^{ALT}$ $B\flat 7^{ALT}$ $G 7^{ALT}$ $E 7^{ALT}$ $D\flat 7^{ALT}$

Chords: $G 7$ $C 7^{ALT}$ $F 7$ $B 7$ $E 7^{ALT}$ $D\flat 7^{ALT}$ $C - 6$

Chords: $G 7$ $C 7^{ALT}$ $F 7$ $B 7$ $E 7^{ALT}$ $D\flat 7^{ALT}$ $C - 6$

Chords: $F 7^{ALT}$ $E 7^{ALT}$ $E\flat 7^{ALT}$ $D 7^{ALT}$ $D\flat 7$ $C 7^{ALT}$ $F - 7$

Chords: $G 7$ $C 7^{ALT}$ $F 7$ $B 7$ $E 7^{ALT}$ $D\flat 7^{ALT}$ $C - 6$

B \flat /A \flat A \flat E \flat /A \flat D \flat C-7 C-7/B \flat G7

The piano introduction consists of two staves. The right hand plays chords in the first two measures, then a melodic line in the next two measures, and finally a more complex melodic line in the last two measures. The left hand plays a simple bass line with quarter notes and rests.

CHORUS 1

The vocal melody for Chorus 1 is written on a single staff. It begins with a C-7 chord and features a mix of quarter and eighth notes. The melody is characterized by a descending line in the first half and an ascending line in the second half. Chord changes are indicated above the staff: C-7, C-7(b9), F-7, C-7, D-7(b9), G7, and C-6.

CHORUS 2

The vocal melody for Chorus 2 is written on a single staff. It features a rhythmic pattern of eighth notes and quarter notes, with some rests. The melody is more active than Chorus 1, with frequent eighth-note runs.

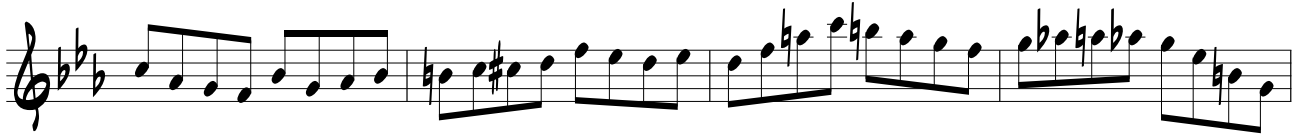


CHORUS 3



CHORUS 4





CHORUS 5

