

DANI CALIFORNIA

RED HOT CHILLI PEPPERS

INTRO

Musical notation for the Intro, measures 1-4. Chords: Am, G, Dm, Am. Includes a 4x repeat sign and a double bar line.

VERSE 2

Musical notation for Verse 2, measures 5-7. Chords: Am, G, Dm, Am. Includes a 3x repeat sign.

Musical notation for Verse 2, measure 8. Chord: Dm. Includes a double bar line and a circled cross symbol with the text "2. TO CODA".

CHORUS

Musical notation for the Chorus, measures 10-11. Chords: F5, C5, C5 D5, G5. Includes a 3x repeat sign and a "SLIDE" instruction.

Musical notation for the Chorus, measures 12-13. Chords: F5, C5, C5 D5. Includes a "SLIDE" instruction and a circled cross symbol with the text "1. TO BRIDGE".

INTERLUDE

Musical notation for the Interlude, measures 15-17. Chords: Am, G, Dm, Am, Am, G, Dm, Am. Includes a guitar tablature section with fret numbers: 13, 12, 15, 12, 13, 12, 15, 17.

D.S. TO BRIDGE

BRIDGE

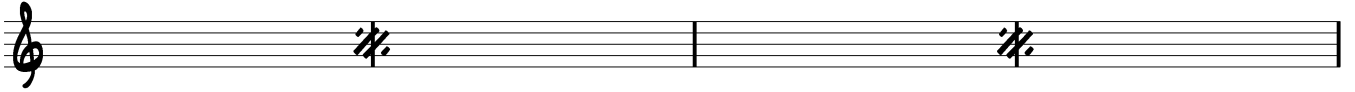
Musical notation for the Bridge, measures 19-22. Chords: Bm, G, D/F#, Bm. Includes a 3x repeat sign and a guitar tablature section with fret numbers: 9, 9, 9, 9, 9, 10, 10, 10, 9, 9, 9, 7, 4, 4, 4, 4, 4, 4, 7, 5, 7, 5.

D.S. TO CODA

CODA

Musical notation for the Coda, measures 23-24. Chords: E7, F5, C5, C5 D5, G5. Includes a "SLIDE" instruction.

27

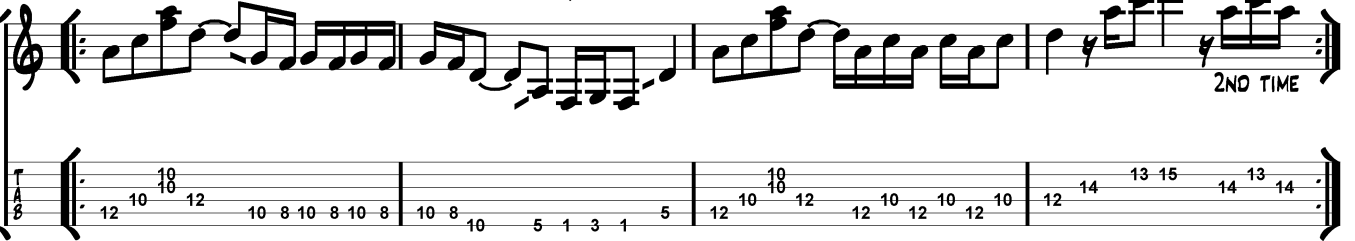


31

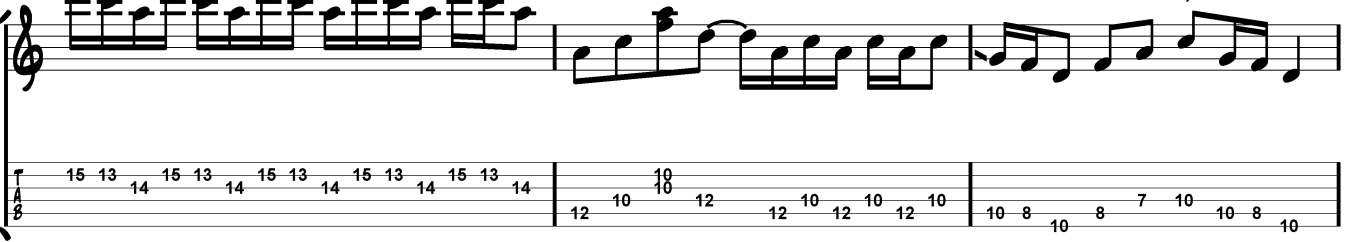


SOLO

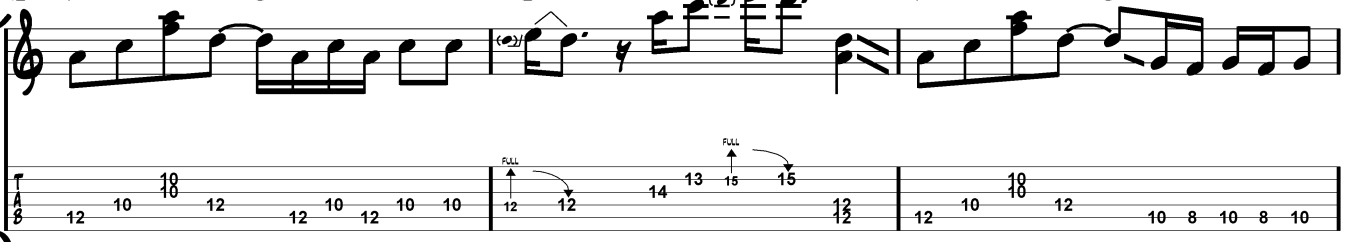
34



38



41



44

