

Sunday Morning

Words & Music by Lou Reed & John Cale

Moderately

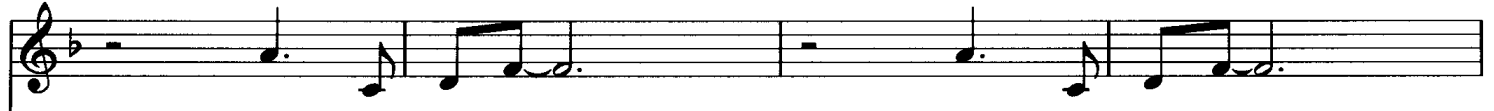
Chord diagrams for F, Bb, F, Bb are shown above the staff. The piano introduction consists of a treble clef staff with a key signature of one flat and a 4/4 time signature. The melody is a sequence of eighth and quarter notes. The bass clef staff provides a simple accompaniment with quarter notes.

Chord diagrams for F, Bb, F, Bb are shown above the staff. The vocal line has two verses: 1. Sun - day morn - ing, — brings the dawn - ing, — and 2. Sun - day morn - ing, — and I'm fall - ing, —. The piano accompaniment continues with the same melody and bass line as the first system.

Chord diagrams for F, Am7/E, Dm, G, C are shown above the staff. The vocal line continues: it's just a rest-less feel - ing by — my side. — I've got a feel - ing — I don't want — to know. —. The piano accompaniment continues with the same melody and bass line.

© Copyright 1966 Oakfield Avenue Music Limited/John Cale Music Incorporated, USA.
Screen Gems-EMI Music Limited (50%)/Universal/Island Music Limited (50%).

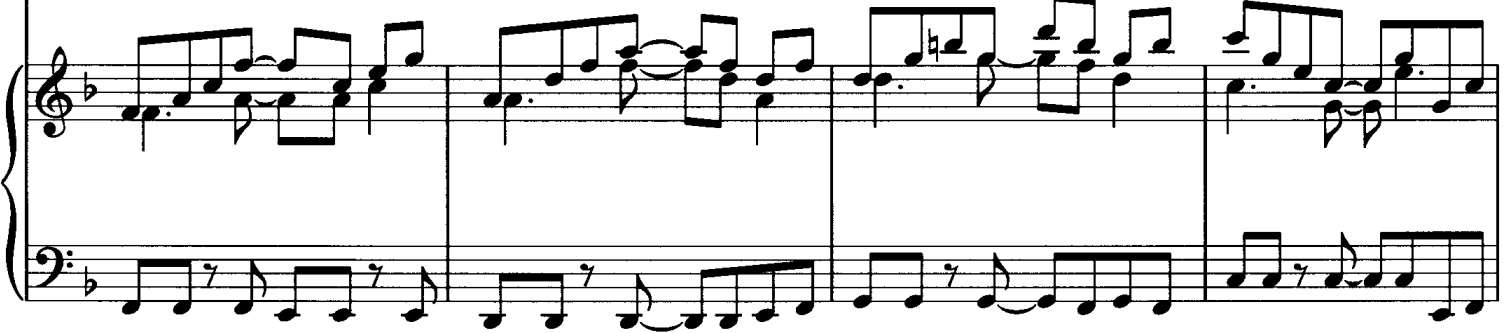
All rights in Germany administered by Universal Music Publ. GmbH. All Rights Reserved. International Copyright Secured.



Ear - ly dawn - ing, Sun - day morn - ing,
 Ear - ly dawn - ing, Sun - day morn - ing,



it's just the wast - ed years so close be hind,
 it's all the streets you crossed not so long a - go.



Watch out, the world's be - hind you, there's al - ways some - one a - round you who will

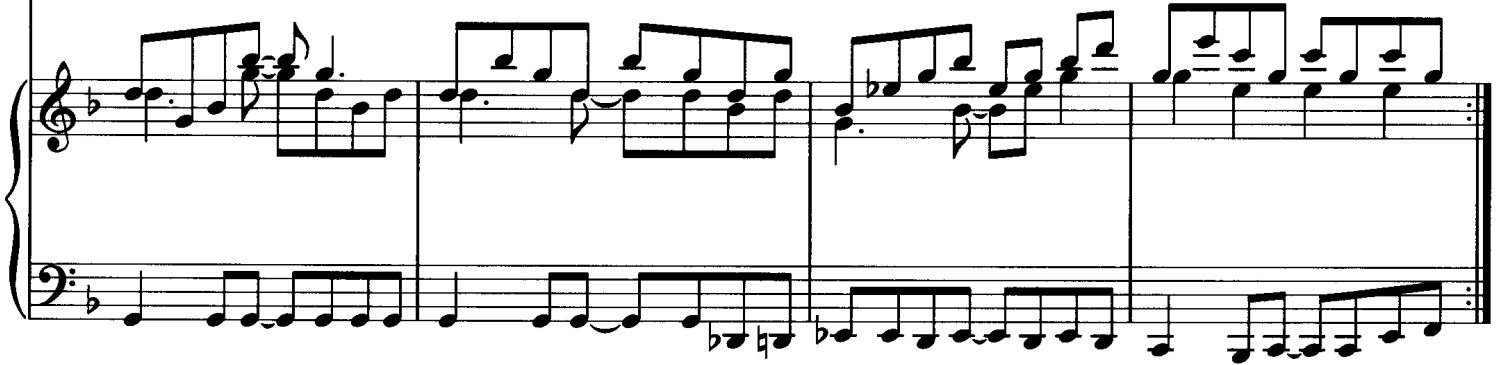




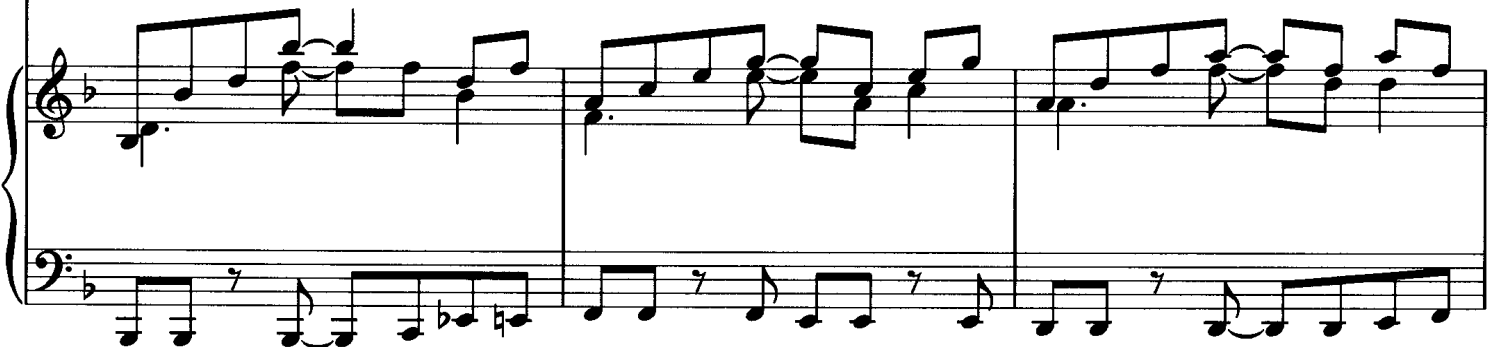
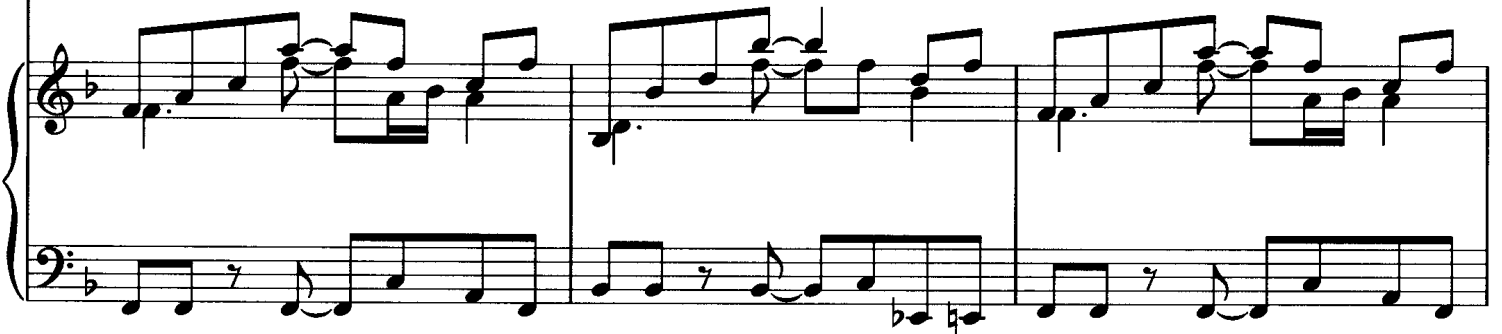
To Coda ♪



call, it's noth- ing at all.---



Guitar solo





D.S. al Coda

Musical score for the first system, including vocal line and piano accompaniment. The key signature has one flat (Bb). The piano accompaniment features a steady bass line with a 7th fret barre and a treble line with chords and moving lines.

Coda



Musical score for the second system, including vocal line and piano accompaniment. The key signature has one flat (Bb). The vocal line begins with a double bar line and the lyrics "Sun - day morn - ing,". The piano accompaniment continues with the same bass line and treble accompaniment.



Repeat and fade

Musical score for the third system, including vocal line and piano accompaniment. The key signature has one flat (Bb). The vocal line begins with a double bar line and the lyrics "Sun - day morn - ing.". The piano accompaniment continues with the same bass line and treble accompaniment, ending with a repeat sign and a double bar line.