

YOU MUST LOVE ME

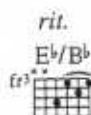
1997 ACADEMY AWARD WINNING SONG FROM THE MOTION PICTURE EVITA
MUSIC BY ANDREW LLOYD WEBBER. LYRICS BY TIM RICE

♩ = 92



Musical notation for the first system, including piano accompaniment and guitar chords.

a tempo



Musical notation for the second system, including piano accompaniment and guitar chords.

a tempo



2^o instr.



Musical notation for the third system, including vocal melody and piano accompaniment.

1. Where do we go from here?

This is - n't where we in -

(Verse 2 see block lyric)



Musical notation for the fourth system, including vocal melody and piano accompaniment.

tend-ed to be.—

We had it all,—

you be - lieved— in me,—

I be -

F11 F F11 F B^b 2^o vocal F/B^b

lieved— in you, — Cer-tain-ties dis - ap -

B^b B^b7 E^b

pear what do we do — for our dream to sur-vive,

Cm⁷ F11 F

how do we keep— all our pas-sions a - live as we used to do? —

F11 F D⁷ Gm

Deep in my heart I'm con - ceal - ing

D7 Gm D7 F/E^b E^b

things that I'm long-ing to say, scared to con-fess what I'm feel - ing

Cm⁷ Dm⁷ rit. F a tempo B^b E^b/B^b F/B^b

fright - ened you'll slip a - way, you must love me, you must love

B^b 1. E^b/B^b F/B^b 2. E^b/B^b rit. F/B^b B^b

me. You must love me.

Verse 2: (Instrumental 8 bars)
 Why are you at my side?
 How can I be any use to you now?
 Give me a chance and I'll let you see how
 Nothing has changed.
 Deep in my heart I'm concealing
 Things that I'm longing to say,
 Scared to confess what I'm feeling
 Frightened you'll slip away,
 You must love me.