



GYMNOPIEDIE

Erik Satie
1^{re} Gymnopédie

Andante







Handwritten musical notation on a grand staff. The upper staff contains a melodic line with various note values and rests. The lower staff contains a bass line with a series of eighth notes, some of which are beamed together. The notation is in black ink on aged paper.

Handwritten musical notation on a grand staff. The upper staff continues the melodic line from the first system. The lower staff continues the bass line with eighth notes. The notation is in black ink on aged paper.

Handwritten musical notation on a grand staff. The upper staff continues the melodic line. The lower staff continues the bass line with eighth notes. The notation is in black ink on aged paper.

Handwritten musical notation on a grand staff. The upper staff continues the melodic line. The lower staff continues the bass line with eighth notes. The notation is in black ink on aged paper.

Alvin 1688



Handwritten musical notation for the first system. The treble staff contains a melodic line with notes, rests, and slurs. The bass staff provides a harmonic accompaniment with chords and single notes.

Handwritten musical notation for the second system. The treble staff continues the melodic development, while the bass staff maintains the accompaniment.

Handwritten musical notation for the third system. The notation includes various rhythmic values and articulation marks.

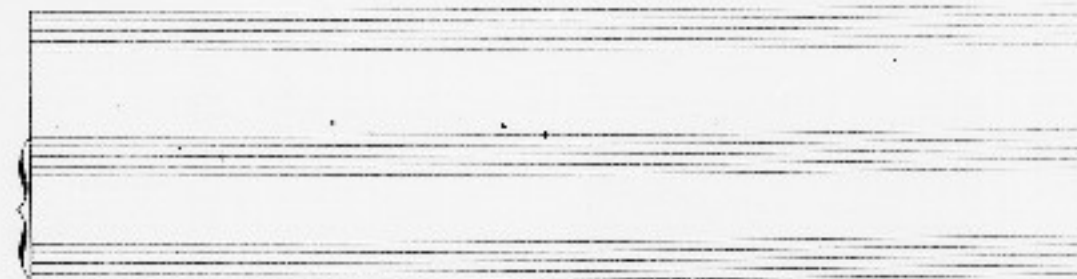
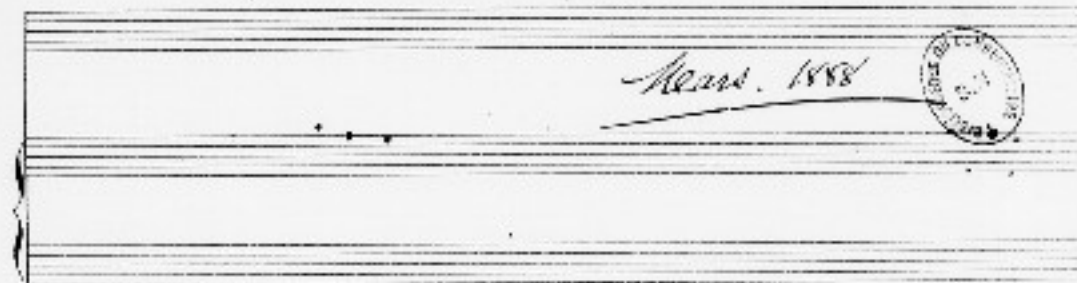
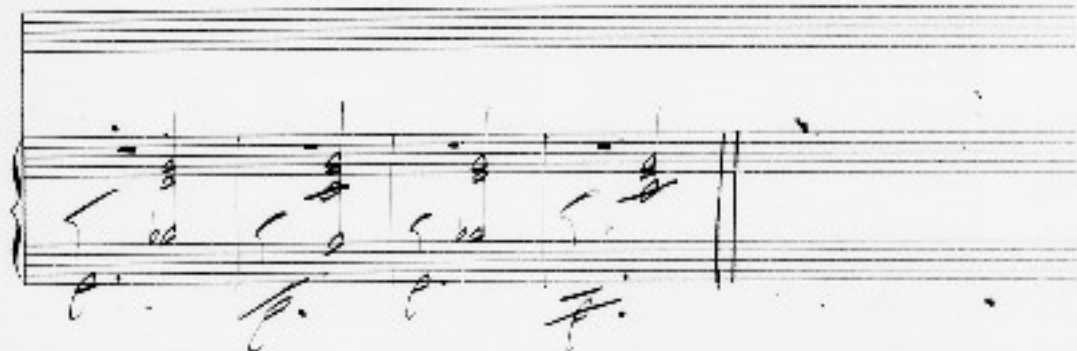
Handwritten musical notation for the fourth system. The piece concludes with a final cadence in both staves.

Handwritten musical notation for the first system. The system consists of two staves. The upper staff is a treble clef staff containing a melodic line with quarter notes, eighth notes, and a half note. The lower staff is a bass clef staff containing a bass line with quarter notes and eighth notes. The music is written in a cursive, handwritten style.

Handwritten musical notation for the second system. The system consists of two staves. The upper staff is a treble clef staff containing a melodic line with quarter notes and eighth notes. The lower staff is a bass clef staff containing a bass line with quarter notes and eighth notes. The music is written in a cursive, handwritten style.

Handwritten musical notation for the third system. The system consists of two staves. The upper staff is a treble clef staff containing a melodic line with quarter notes and eighth notes. The lower staff is a bass clef staff containing a bass line with quarter notes and eighth notes. The music is written in a cursive, handwritten style.

Handwritten musical notation for the fourth system. The system consists of two staves. The upper staff is a treble clef staff containing a melodic line with quarter notes and eighth notes. The lower staff is a bass clef staff containing a bass line with quarter notes and eighth notes. The music is written in a cursive, handwritten style.



Handwritten musical notation on a grand staff with a treble clef. The music features a melodic line in the upper voice and a bass line in the lower voice. A dynamic marking 'pp' is present. A large slur covers the entire system.

Handwritten musical notation on a grand staff with a treble clef. The music continues with a melodic line and a bass line. A large slur covers the entire system.

Handwritten musical notation on a grand staff with a treble clef. The music continues with a melodic line and a bass line. A large slur covers the entire system.

Handwritten musical notation on a grand staff with a treble clef. The music continues with a melodic line and a bass line. A large slur covers the entire system.



Handwritten musical notation on a grand staff. The top staff has a treble clef and the bottom staff has a bass clef. The notation includes various notes, rests, and dynamic markings such as 'pp' and 'p'. There are some scribbles and corrections throughout the piece.

Handwritten musical notation on a grand staff, continuing from the first system. It features notes, rests, and dynamic markings like 'pp'. There are some scribbles and corrections throughout the piece.

Handwritten musical notation on a grand staff, mostly obscured by a large signature and a circular stamp. The signature appears to be 'R. P. ...'. There are some scribbles and corrections throughout the piece.

