

Blue Eyes

Words and Music by Elton John and Gary Osborne

Relaxed ♩ = 69
Verse

Vocal

B \flat F/A Fm/A \flat Gm

Blue eyes, - ba - by's got blue - eyes,
Blue eyes, - ba - by's got blue - eyes,

Piano

2nd time - sim. *mf* Play Fill 1 - 2nd time

Electric Piano

2nd time - sim. *mf*

Strings

Play cues 2nd time *mp*

Fill 1

Gm

Eb9#11 Bb/D

like a deep blue sea on a blue, blue
 like a clear blue sky watch-ing o - ver

Detailed description: This system contains the first three measures of the piece. The vocal line is in the upper staff, with lyrics underneath. The piano accompaniment consists of a right-hand part with chords and triplets, and a left-hand part with a triplet bass line. The key signature has two flats (Bb), and the time signature is 4/4. The first measure is a whole rest for the vocal line. The second and third measures contain the vocal line and piano accompaniment. The piano accompaniment features a triplet bass line in the left hand and chords with triplets in the right hand.

F/C Bb

day. Blue eyes,
 me. Blue eyes,
 Play Fill 2 - 2nd time

Detailed description: This system contains the next three measures. The vocal line continues with the lyrics 'day. me. Blue eyes, Blue eyes,'. The piano accompaniment continues with similar patterns. The first measure is a whole rest for the vocal line. The second and third measures contain the vocal line and piano accompaniment. The piano accompaniment features a triplet bass line in the left hand and chords with triplets in the right hand. The key signature has two flats (Bb), and the time signature is 4/4. The dynamic marking 'mp' is present at the end of the system.

Fill 2 Bb

Detailed description: This is a boxed-in section titled 'Fill 2'. It is in the key of Bb and 4/4 time. It consists of two measures. The first measure has a whole rest in the vocal line. The piano accompaniment features a triplet bass line in the left hand and chords with triplets in the right hand. The second measure contains the vocal line and piano accompaniment. The key signature has two flats (Bb), and the time signature is 4/4.

F/A Fm/Ab Gm

ba - by's got blue eyes. When the morn - ing
 ooh, I love blue eyes. When I'm by her

Eb9#11 Em7b5

— comes — I'll be far — a - way, —
 — side, — where I long — to be, —

2nd time 8va

Chorus

A+ A Dm Bb/D

and I say, I will see

1. Blue eyes hold-ing back the tears, hold- ing back
 2., 3. Blue eyes laugh-ing in the sun, laugh- ing in

f

sim. on repeats

F F/A Fm/Ab Gm To Coda

the pain. the rain. Ba - by's got blue - eyes and she's a -
 Ba - by's got blue - eyes and I am

1 Eb9 Bb/C C F

lone _____ a - gain. _____

2 Eb Ab Gb Db/F Ab/Eb Eb Eb9

home, _____

Sva bassa -----

Synthesizer w/strings

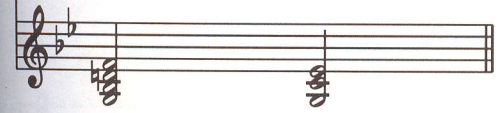
Bb/C

C *D.S. al Coda*

3



and I am home a-gain.



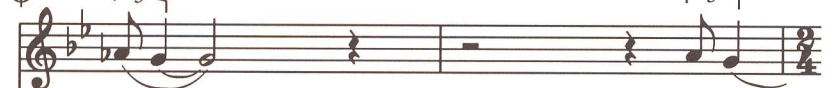
CODA

Eb9

Bb/C

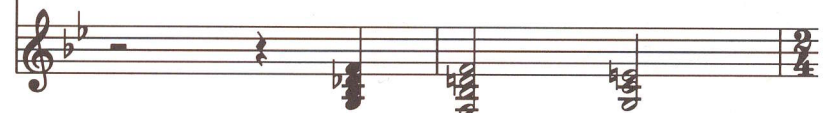
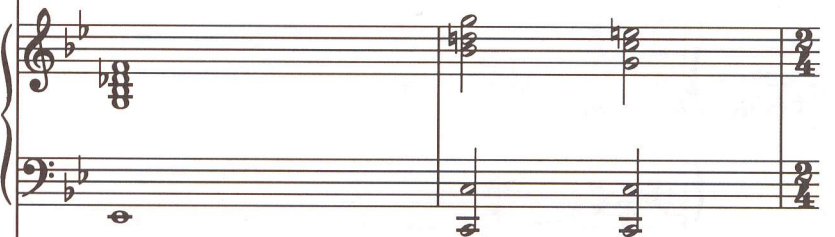
C

3



home. —

a - gain. —



F

Eb

Ab

Gb

Db/F

Ab/Eb

Eb



8va bassa



Synthesizer w/strings

