

On The Radio

highest chart position Watch this space! Single not released at time of publication
release date Monday 22nd January 2001

words and music by
Giorgio Moroder and Donna Summer

did you know The original version of this track was recorded by disco diva Donna Summer and reached a surprisingly modest chart position of 32 in February 1980

♩ = 132

Em7 A11 Dmaj9

Em7 A11 Dmaj9

Em7 A11 Dmaj9

1. Some-one found a let - ter you wrote me on the ra - di - o.
 (2.) don't it kind of strike you sad when you hear our song?

Em7 A11 Dmaj9

Em7 A11 Dmaj9

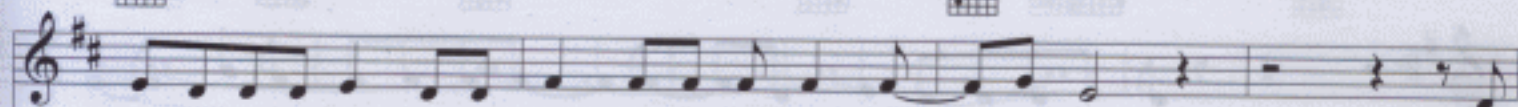
And they told the world just how you felt. It
 Things are not the same since we broke up last June.

Em7 A11 Dmaj9

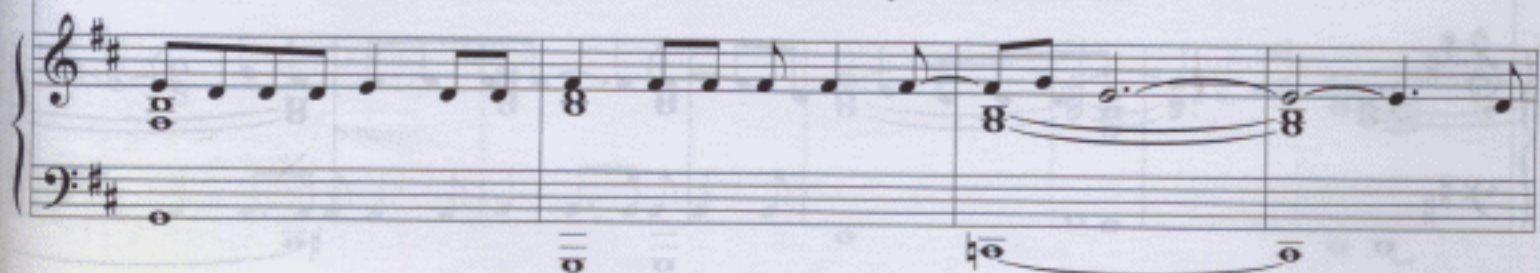
Gmaj7



Cmaj7



must-'ve fall-en out of a hole in your old brown ov - er - coat. I
The on - ly thing that I wan - na hear is that you love me still. They



Am7



Vib. D



nev - er said your name but I — knew just — who they meant. — Whoa. —
And that you think you'll be com - ing home — real — soon. — Whoa. —



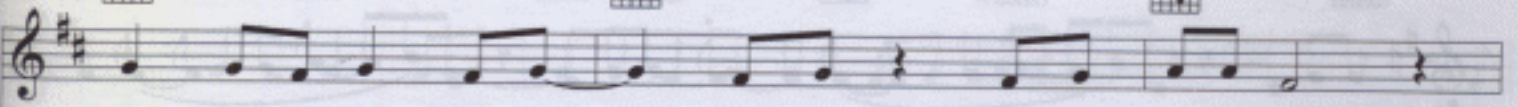
Em7



A11



Dmaj9



Oh, I was so sur - prised — and shocked and I won - der too,
Oh, yeah it kind of made me feel proud when I heard you sing.



E1-dim



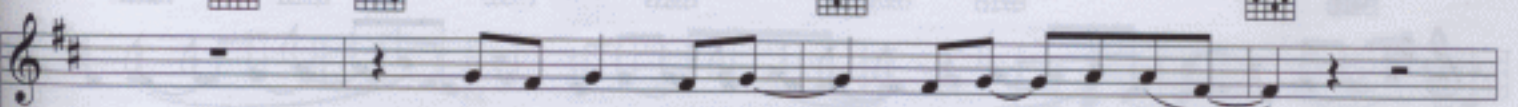
Em7



A11



Dmaj9



You if by chance you heard — it for — your - self. —
could - n't find the words — to say — it your - self. —



Gmaj7  Cmaj7 




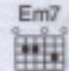

I nev - er told a soul just how — I've — been feel - ing ov - er you —
And now in my heart I know — I can say what I real - ly feel —



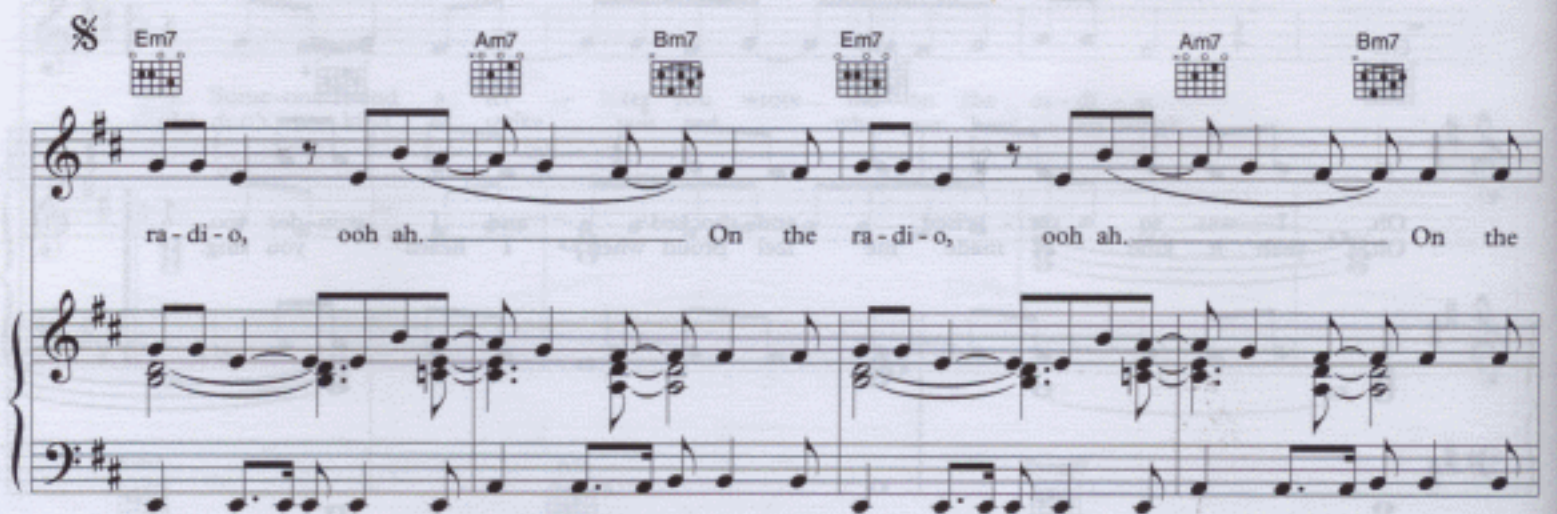
Am7  D 

But they } said it real - ly loud, they said — it on the air. On the
'Cos they }



Em7  Am7  Bm7  Em7  Am7  Bm7 

ra - di - o, ooh ah. — On the ra - di - o, ooh ah. — On the



To Coda ⊕ 1.

Em7  Am7  Bm7  Em7  Am7  Bm7 

ra - di - o, ooh ah. — On the ra - di - o, ooh ah. — Now, now,



2. Am7 Bm7 Em7 A11 Dmaj9

This system shows the first five measures of a musical phrase. The guitar part has a treble clef and a key signature of two sharps (F# and C#). The chords are Am7, Bm7, Em7, A11, and Dmaj9. The piano accompaniment consists of a treble and bass clef. The bass line features a steady eighth-note pattern in the first two measures, followed by a more complex rhythmic pattern in the last three measures.

Em7 A11 Dmaj9

This system shows the next five measures. The guitar part has a treble clef and a key signature of two sharps. The chords are Em7, A11, and Dmaj9. The piano accompaniment continues with a treble and bass clef, featuring a mix of chords and melodic lines.

Em7 A11 Dmaj9 E-dim

3. If you think that love is - n't found on the ra-di-o. Then

This system contains the first line of lyrics. The guitar part has a treble clef and a key signature of two sharps. The chords are Em7, A11, Dmaj9, and E-dim. The piano accompaniment has a treble and bass clef. The lyrics are: "3. If you think that love is - n't found on the ra-di-o. Then".

Em7 A11 Dmaj9

tune right in, you may find the love you lost. (oh.) (Oh.) 'Cos

This system contains the second line of lyrics. The guitar part has a treble clef and a key signature of two sharps. The chords are Em7, A11, and Dmaj9. The piano accompaniment has a treble and bass clef. The lyrics are: "tune right in, you may find the love you lost. (oh.) (Oh.) 'Cos".

Gmaj7



Cmaj7



now I'm sit-ting here with the man I sent a-way long a-go.

Am7



D

*D.S. al Coda*

You've fi-n'ly re-al-ised they said it real-ly loud. On the

⊕ Coda

Am7



Bm7



Em7



Am7



Bm7

*Play 3 times*

On the ra-di-o. On the

Em7



Am7



Bm7



Em7



ra-di-o, ooh ah. On the ra-di-o.