

# (They Long To Be) CLOSE TO YOU

Words by  
HAL DAVID

Music by  
BURT BACHARACH

*Slowly and Steady*

Why do birds sud - den - ly ap - pear ev - 'ry - time you are

near. Just like me, — they long to be close to you. —

*Tacet*

— Why do stars fall down from the sky ev - 'ry - time you walk

by. Just like me, — they long to be close to you. —

Chord diagrams shown in the score:

- A $\flat$
- G7(sus)
- G7
- Gm7
- Cm7
- A $\flat$
- E $\flat$ 6
- E $\flat$ maj7
- A $\flat$
- G7(sus)
- G7
- Gm7
- Cm7
- A $\flat$
- E $\flat$ 6
- E $\flat$ maj7



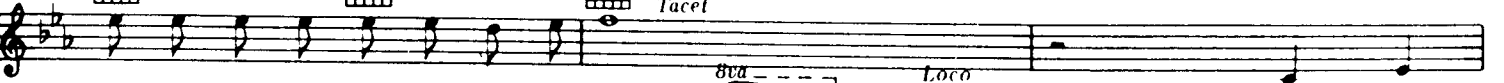
On the day that you were born the an - gels got to - geth - er and de -



- cid - ed to cre - ate a dream come true. So they sprin - kled moon dust in your hair of



Tacet



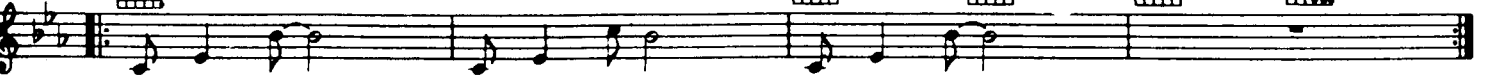
gold and star - light in your eyes of blue. *8va* *Loco* That is



why all the boys in town fol - low you all a - round.



Keep Repeating and Fade Out



Just like me, - they long to be close to you. -



dim. poco a poco