

# ARTHUR'S THEME


(Best That You Can Do)

Words and Music by  
BURT BACHARACH, CAROLE BAYER SAGER,  
CHRISTOPHER CROSS and PETER ALLEN


Moderately




Once in your life, you'll find  
Ar - thur, he does what he




her, some-one who turns\_ your heart a - round, and  
 pleas - es. All of his life, \_ his mas - ter's toys, and



next thing you know, you're clos - in' down the town.  
 deep in his heart, he's just, he's just a boy.



Wake up and she's\_ still with\_ you,  
 Liv - in' his life\_ one day\_ at a time, he's



e - ven though you left her way\_ a-cross town. You're won - der - in' to your -  
 show - ing him - self a real - ly good time. He's laugh - in' a - bout the

E7sus4

E7

A

E/A

A

A/C#



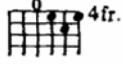
self, hey, what - 've I found?  
way, they, they want him to be.

Dmaj7

E/D 4fr.

D

Amaj7



When you get caught be-tween the moon and New York Cit - y,

Bm7

A/B

Bm7



I know it's cra - zy, but it's true.

A

A/C#

Dmaj7



If you get caught be - tween the

E/D 4fr.    D    C#m7 4fr.    F#7sus4    F#7

moon and New York Cit - y, the

Detailed description: This system contains the first two lines of music. The top line is the vocal melody in treble clef, with lyrics 'moon and New York Cit - y, the'. Above the staff are five guitar chord diagrams: E/D (4fr.), D, C#m7 (4fr.), F#7sus4, and F#7. The bottom two staves are piano accompaniment in treble and bass clefs, with a key signature of two sharps (F# and C#).

Bm7

best that you can do, the best that you can do

Detailed description: This system contains the next two lines of music. The top line is the vocal melody in treble clef, with lyrics 'best that you can do, the best that you can do'. Above the staff is one guitar chord diagram: Bm7. The bottom two staves are piano accompaniment in treble and bass clefs, with a key signature of two sharps.

D/A

1. A    A/C#

2. A    D. S.  $\frac{3}{4}$  and fade    A/C#

is fall\_ in love.\_\_\_\_

Detailed description: This system contains the final two lines of music. The top line is the vocal melody in treble clef, with lyrics 'is fall\_ in love.\_\_\_\_'. Above the staff are guitar chord diagrams: D/A, and two first endings for A and A/C#. The second ending includes the instruction 'D. S. 3/4 and fade' and another A/C# diagram. The bottom two staves are piano accompaniment in treble and bass clefs, with a key signature of two sharps.

# BEAUTIFUL MARIA OF MY SOUL

("Bella Maria De Mi Alma")

Lyrics by  
ARNE GLIMCHER

Music by  
ROBERT KRAFT

Moderately

Gm7 C9 Eb6 D7 Ebmaj7

D7 Cm7 F7

In the sun-light of your smile, in the sum-mer of our  
Though we'll al-ways be a-part, locked for-ev-er in a

Gm7 F6 Ebmaj7 Cm7 Dm7

life, in the mag-ic of love storms a-  
dream. If I ev-er love a-gain ev-en

Beautiful Maria of My Soul - 6 - 1

**E♭maj7**
**D7**
**E♭**
**D7**

bove then.      scat - tered a - way.      Lov - ers dream - ing in the  
 noth - ing will change.      And the taste of you re -

*mp*

**Cm7**
**F7**
**B♭maj7**
**E♭maj7**
*To Coda*

night,      reach - ing for Par - a - dise.      But as the  
 mains,      cling - ing to Par - a - dise.      But as the

**Cm7**
**Gm7**
**E♭maj7**
**D7**

dark shad - ows fade,      love slips a - way.      On an emp - ty stretch of

*f*      *mp*

**Cm7**
**F7**
**Gm7**
**F6**
**E♭maj7**

beach,      in the pat - tern of the waves.      Draw - ing pic - tures with my

Cm7 3fr. Dm7 E7maj7 D7 F Eb D7

hand in the sand. I see your face. Skip-ping peb-bles on the

Cm7 3fr. F7 Bbmaj7 E7maj7

sea, wish-ing for Par - a - dise. Sand cas - tles

Cm7 3fr. Gm7 3fr. Cm7 3fr. Cm7/Bb Am7-5 D7+9 4fr.

crum - ble - be - low, the rest - less tides ebb - and flow - Listen - ing to a

Gm7 3fr. Ebm6 Gm7 3fr. Ebm6

shell. hop - ing for your voice.