

# New Year's Day

Words and Music by U2

$\text{♩} = 132$



Yeah! \_\_\_\_\_



F#sus2



C#m/E



G#m7sus4



B



D#m



G#m7sus4



B



D#m



1. All is qui - et on New Year's Day.

(Verse 2 see block lyric)

G#m



B



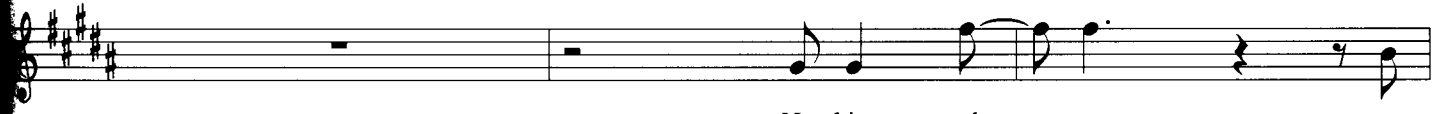
D#m



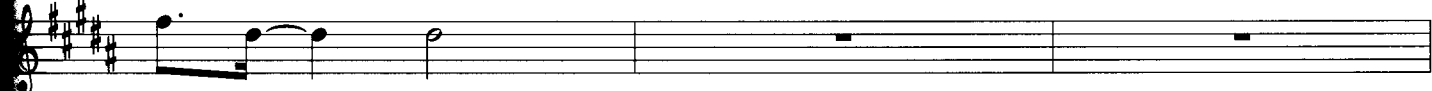
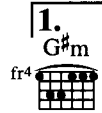
A world in white gets un-der - way.



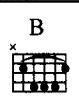
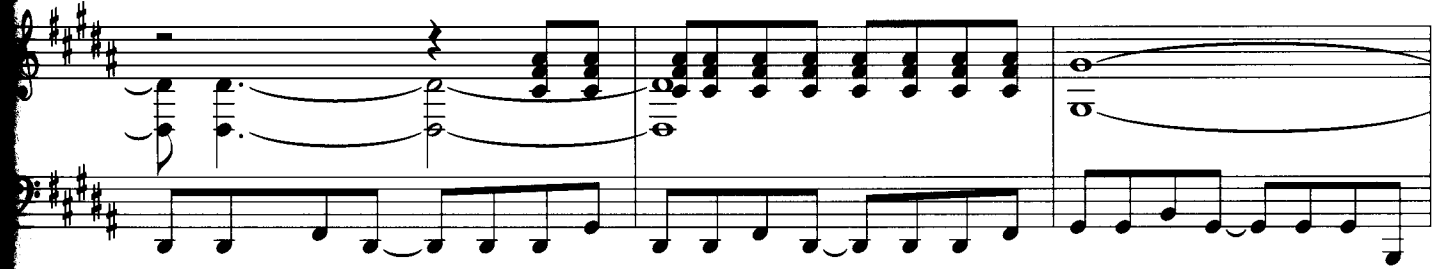
I want to be with you, be with you night and day.



No-thing chan - ges on



New Year's Day.



On New Year's Day.

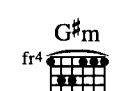




I \_\_\_\_\_ will be with you a - gain. \_\_\_\_\_



I \_\_\_\_\_ will be with you a - gain. \_\_\_\_\_



2. true, it's \_\_\_\_\_ true. \_\_\_\_\_ And we can \_\_\_\_\_ break \_\_\_\_\_ through. \_\_\_\_\_ Though-



torn \_\_\_\_\_ in two, \_\_\_\_\_ we can \_\_\_\_\_ be \_\_\_\_\_ one. \_\_\_\_\_



Musical staff with treble clef, key signature of two sharps (F# and C#), and a common time signature. The melody consists of a half note F#4, followed by quarter notes G#4, A4, B4, and C#5, then a half note B4. The lyrics "I, I will be - gin a - gain." are written below the staff.

I, I will be - gin a - gain.

Two musical staves: a treble staff with a guitar accompaniment of chords and a bass staff with a bass line of eighth notes.



Musical staff with treble clef, key signature of two sharps, and a common time signature. The melody consists of a half note F#4, followed by quarter notes G#4, A4, B4, and C#5, then a half note B4. The lyrics "I, I will be - gin a - gain." are written below the staff.

I, I will be - gin a - gain.

Two musical staves: a treble staff with a guitar accompaniment of chords and a bass staff with a bass line of eighth notes.



Musical staff with treble clef, key signature of two sharps, and a common time signature. The melody features a half note G#4, quarter notes A4, B4, and C#5, followed by a half note B4. The lyrics "I, I will be - gin a - gain." are written below the staff.

I, I will be - gin a - gain.

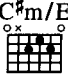
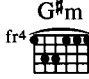
Two musical staves: a treble staff with a guitar accompaniment of chords and a bass staff with a bass line of eighth notes.

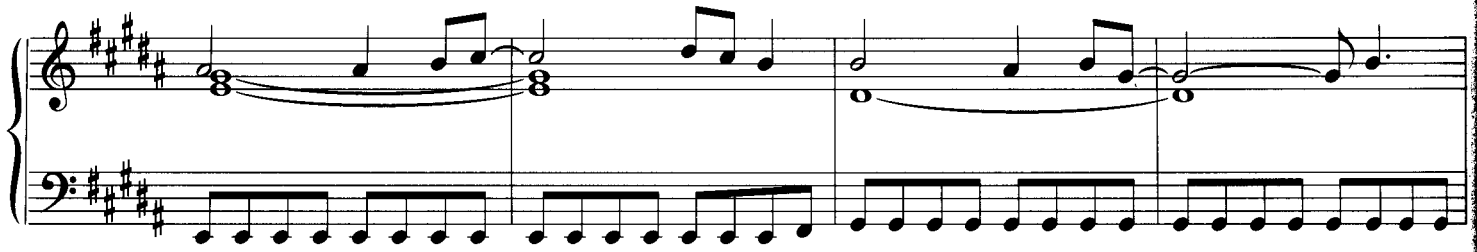


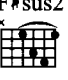
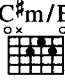
Musical staff with treble clef, key signature of two sharps, and a common time signature. The melody features a half note G#4, quarter notes A4, B4, and C#5, followed by a half note B4. The lyrics "I, I will be - gin a - gain." are written below the staff.

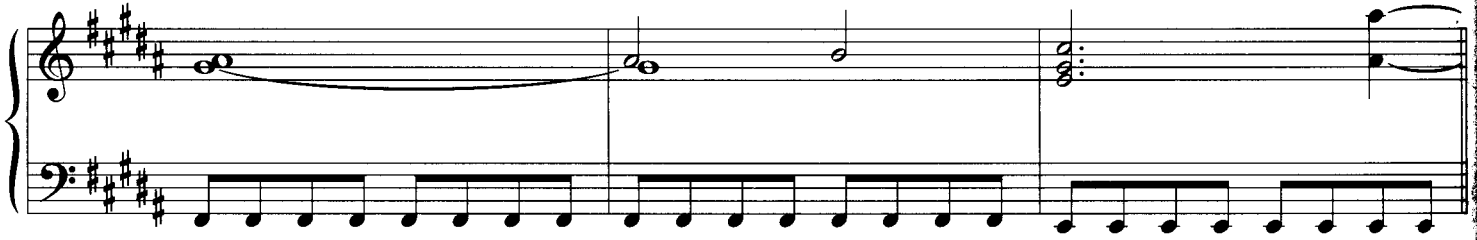
I, I will be - gin a - gain.

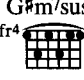
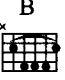

Two musical staves: a treble staff with a guitar accompaniment of chords and a bass staff with a bass line of eighth notes.

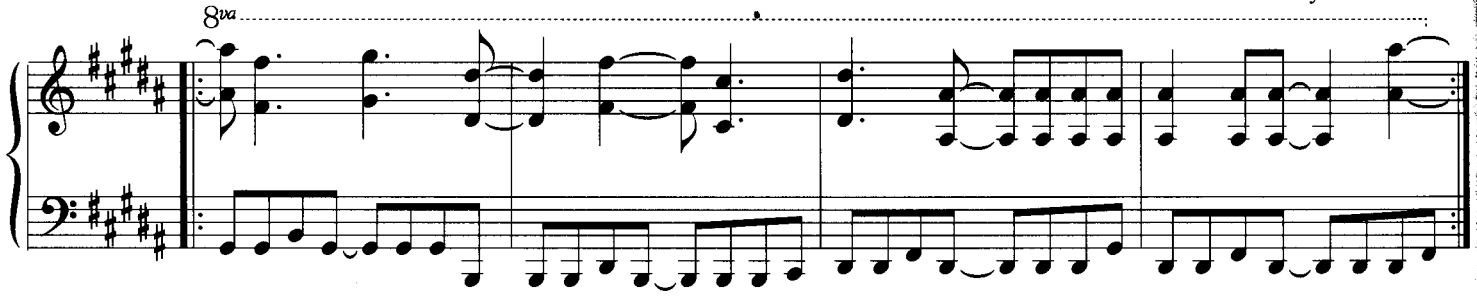
C#m/E  G#m 

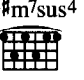
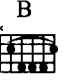



F#sus2  C#m/E  8va.....




G#m7sus4  B  D#m  8va..... *Play 4 times ad lib.*



G#m7sus4  B  D#m 

Uh uh uh uh uh uh.—





I will be with you a - gain.



I will be with



*Repeat to fade*

you a - - - gain.

*Verse 2:*  
 Under a blood red sky  
 A crowd has gathered in black and white  
 Arms entwined, the chosen few  
 The newspaper sellers say it's true  
 And we can break through  
 Though torn in two  
 We can be one.

I, I will begin again  
 I, I will begin again.