

SMOKE GETS IN YOUR EYES

Copyright © 1933 T.B. Harms Company. Copyright Renewed. (c/o The Welk Music Group, Santa Monica, CA 90401)

Words by Otto Harbach
Music by Jerome Kern

Moderately

E^b Gm7 G^bdim7 Fm7 B^b7 E^b G7#5 A^bM7 Adim7



They asked me how I knew my true love was true? I of course re -
They said some - day you'll find, all who love are blind. When your heart's on

Gm7 Cm7 Fm7 B^b7 1. G7 C7 Fm7 B^b7 2. E^b



plied, "Some - thing here in - side, can - not be de - nied." _____
fire, you must re - al - ize. Smoke Gets In Your Eyes. _____

B^M7 G^bm7 C^bm7 Cdim7 C^bm7 F^b7



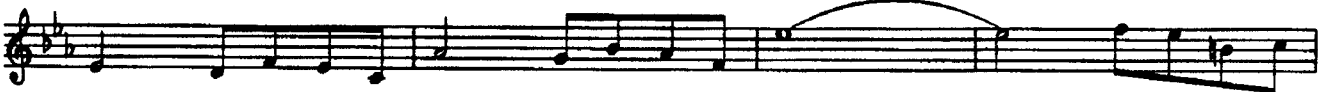
So I chaffed _____ them and I gay - ly laughed, _____ to think they could doubt my love.

B^M7 A^bm7 Fm7/B^b B^b7 E^bM7 C7#9 Fm7 B^b9



Yet to - day, _____ my love has flown a - way, _____ I am with - out my love.

E^b Gm7 G^bdim7 Fm7 B^b7 E^b G7#5 A^bM7 Adim7



Now laugh - ing friends de - ride, tears I can - not hide, _____ so I smile and

Gm7 Cm7 Fm7 B^b7 E^b6 D^b6 D6 E^b6/9



say, "When a love - ly flame dies, Smoke Gets In Your Eyes." _____