

I Wish

Scott Alan

rubato

A princ-ess slept in a tow-er for

Brightly

F B \flat F B \flat F(no3)

Detailed description: This system contains the first five measures of the piece. The vocal line begins with a whole rest for three measures, followed by a half note 'A' and a quarter note 'princ-ess' in the fourth measure, and 'slept in a tow-er' in the fifth measure. The piano accompaniment starts with a treble clef and a key signature of one flat. The first measure is marked 'Brightly' and features a sixteenth-note arpeggiated pattern in the right hand and a bass line. Chord changes are indicated above the staff: F, B-flat, F, B-flat, and F(no3). A 'rubato' marking is placed above the vocal line in the fifth measure.

6

sev-en-teen years A - wait-ing a prince She was told would ap-pear His kiss had to be strong yet

6 Csus/B \flat F(add2)/A Csus/B \flat F(add2)

Steady tempo

Detailed description: This system contains measures 6 through 9. The vocal line continues with 'sev-en-teen years' in measure 6, 'A - wait-ing a prince' in measure 7, 'She was told would ap-pear' in measure 8, and 'His kiss had to be strong yet' in measure 9. The piano accompaniment features a consistent bass line of quarter notes. Chord changes are marked above the staff: Csus/B-flat, F(add2)/A, Csus/B-flat, and F(add2). A 'Steady tempo' marking is placed above the piano staff in measure 8.

10

ten-der and ___ sweet to a - wa - ken her from her rest - ful re - treat ___ But when her

10 Fsus/B \flat F(add2) F/B \flat

Detailed description: This system contains measures 10 through 12. The vocal line continues with 'ten-der and ___ sweet' in measure 10, 'to a - wa - ken her from her rest - ful re - treat ___' in measure 11, and 'But when her' in measure 12. The piano accompaniment continues with the same bass line. Chord changes are marked above the staff: Fsus/B-flat, F(add2), and F/B-flat.

13



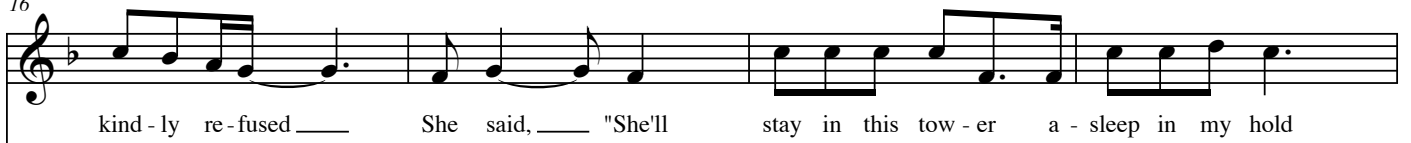
13

D m7

C 6/E

F(add2)/A

16



16

C sus/B \flat

C sus

F(add2)

F sus/B \flat *rubato**a tempo*

20



20

F(add2)/A

C sus/B \flat

F(add2)/A

23

rest of her life — Dream-ing of free-dom — be-hind curs-es — and vines.

rest of her life — Dream-ing of free-dom — be-hind curs-es — and vines.

B^b(add2)

E^b(#4)

E^b

F(add2)

B^b(add2)

Piano accompaniment for measures 23-27, including chord diagrams and bass line.

28

Well I'm not in a tow-er and I'm not locked a-way and no

Well I'm not in a tow-er and I'm not locked a-way and no

F(add2)

B^b(add2)

Csus

F(add2)

Fsus/B^b

Piano accompaniment for measures 28-31, including chord diagrams and bass line.

32

mag-ic spell could force me to stay — I'm still keep-ing hope that

mag-ic spell could force me to stay — I'm still keep-ing hope that

F

Csus/B^b

F(add2)

Piano accompaniment for measures 32-35, including chord diagrams and bass line.

35

she'll come a-round, that she'll un-der-stand — I need out of this town I'll see

35 F_{sus}/B^b F C_{sus}/B^b

38

out-side this world — so this small town can see — that I'll dare to i-ma - gine a world

38 D m7 C 6/E F(add2)/A

41

big-ger — than me And if I close my eyes and I shut them real tight — And

41 C_{sus}/B^b B^b(add2)/C F(add2)/A C_{sus}/B^b

45

I make a wish With all _____ of my might a wish, one day she'll see _____ This is

45 F(add2)/A Csus/B \flat F(add2)/A

48

part of the plan _____ Just the start of a dream A dream I've al - ways had

48 Csus/B \flat F(add2)/A E \flat (#4) E \flat F(add2)

52

and no dra-gons and no war-locks and no wi-zards _____ and _____ no _____

52 Csus/B \flat E \flat (add2)/F F(add2) E \flat (add2)/F

Building

56 F

— spells — could keep me from writ - ing the stor - ies that my

56 F(add2) E \flat (add2)/F F(add2)

59

heart for sev-en-teen — years has been wait - ing to tell. —

59 E \flat (add2)/F E \flat (add2)/F F(add2) E \flat (add2)/F

63

And so I'll close my eyes — and I'll

63 F F \sharp (add2)

66

shut them real tight___ and I'll make a wish with all___ of my might a wish,

66 C#sus/B F#(add2)/A# C#sus/B

69

one day she'll see___ This is part of the plan___ Just a start of the dream___

69 F#(add2)/A# C#sus/B F#(add2)/A#

72

___ this is all that I___ dream this is all of my dream___

72 C#sus/B F#(add2)/A# C#sus/B F# F#/A# B m6

77

well I wish And I wish

F# B F# B

82

Freely

yes I wish

F# B F#(no3)

p. 8vb