

# BECAUSE THE NIGHT

Words and Music by  
PATTI SMITH and BRUCE SPRINGSTEEN

Moderate rock ♩ = 120

Bm G A Bm Bm G

*p*

The piano introduction consists of six measures. The first measure has a Bm chord, the second a G chord, the third an A chord, the fourth a Bm chord, the fifth a Bm chord, and the sixth a G chord. The melody is played in the right hand, and the bass line is in the left hand.

Verse:

A Bm Bm G A Bm

1. Take me now, ba - by, here as I am.  
2. Have I doubt, ba - by, when I'm a - lone?

G A Bm G

Pull me close; try and un - der - stand. De - sire is hun - ger, is the  
Love is a ring, the tel - e - phone. Love is an an - gel dis -

A

Bm

G

A

Bm

fire I breathe...  
guised as lust...

Love is a ban - quet on which we feed...  
here in our bed... un - til the morn - ing comes...

G

A

D

A

Bm

G

Come on now, try and un - der - stand the way I feel un - der

your com - mand. Take my hand as the sun de - scends. They can't hurt you now,

can't hurt you now, can't hurt you now.

*cresc.*

Chorus:

Bm G A Bm G A Bm

Be-cause the night be - longs to lov - ers. Be-cause the night be - longs to us. —

G A Bm G I. A Bm D.C.

Be-cause the night be - longs to lov - ers. Be-cause the night be - longs to us. —

2. A Bm G A D A Bm G

longs to us. —

A D G A G

With love we sleep; with doubt the vi-cious cir-cle

... end solo)

Bm A D A Bm A D

turns and turns. With-out you, oh I can-not live, for-give, the

A D G D G Bm

yearn-ing, burn-ing, I be-lieve in time, too real to feel. So, take me now,

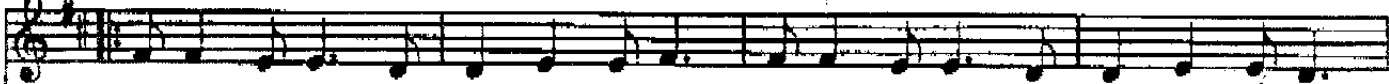
*cresc.*

D G F#

take me now, take me now, take me now,

*f*

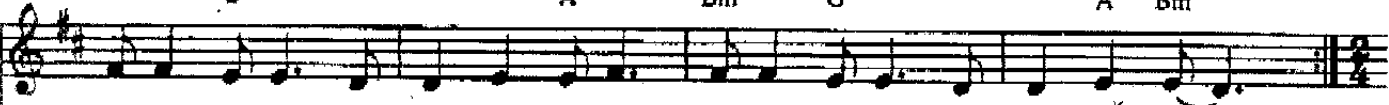
Bm G A Bm G A Bm



Be-cause the night be - longs to lov - ers, Be-cause the night be - longs to us. —  
(Vocal 1st time only)



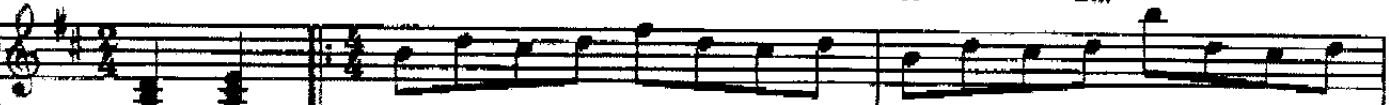
G A Bm G 1. A Bm



Be-cause the night be - longs to lov - ers. Be-cause the night be - longs to us. —



2. G A Bm G A Bm



*dim.* *p*



Bm G 1. A Bm 2. A B2

