

*From: "Glee"*

# **Somebody To Love**

by

FREDDIE MERCURY


Published Under License From

EMI Music Publishing

© 1976 Queen Music Ltd

Authorized for use by *Jerome Hayden*

NOTICE: Purchasers of this musical file are entitled to use it for their personal enjoyment and musical fulfillment. However, any duplication, adaptation, arranging and/or transmission of this copyrighted music requires the written consent of the copyright owner(s) and of EMI Music Publishing. Unauthorized uses are infringements of the copyright laws of the United States and other countries and may subject the user to civil and/or criminal penalties.

 <http://www.musicnotes.com>

# SOMEBODY TO LOVE

Words and Music by FREDDIE MERCURY

♩ = 110 Rubato

A<sup>b</sup> Eb/G Fm D<sup>b</sup>maj7
A<sup>b</sup>/Eb
D<sup>b</sup>
A<sup>b</sup>/C A<sup>b</sup>/Eb Eb

Can an - y - bod - y \_\_\_\_\_ find me \_\_\_\_\_ some - bod - y to \_\_\_\_\_

(An - y - bod - y \_\_\_\_\_ find me some - bod - y to \_\_\_\_\_

*mf* *mp*

Moderately, in 2

A<sup>b</sup>5
N.C.
A<sup>b</sup> Eb/G Fm
D<sup>b</sup>
Eb7

6 love? Ooh, \_\_\_\_\_ ooh. \_\_\_\_\_ 1. Each

love?)

2

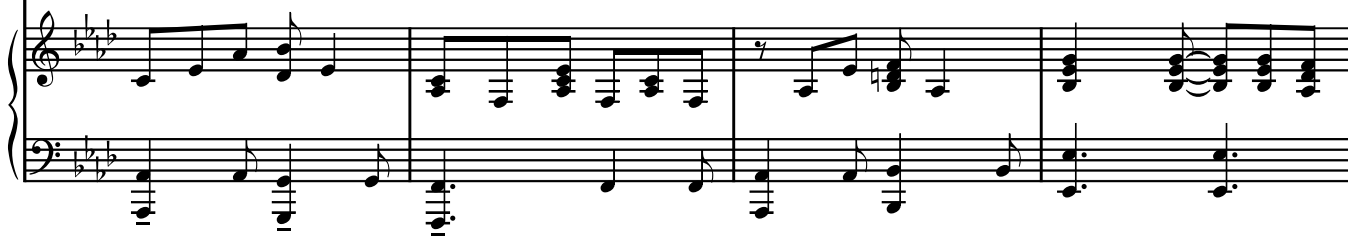


12



morn-ing I get up, I die a lit-tle; can bare-ly stand on my feet. — Take a

(Take a look at your -



16



look — in the mir - ror and cry, Lord, what you're do-ing to me. — I have

self in — the mir - ror and cry — yeah.) —



20



spent all my years in be - liev-ing you, but I just can't get no re - lief, — Lord,

(Ooh, — be - liev-ing you, I just can't get no re - lief, Lord,



24

Ab Eb/G Fm7 Dbmaj9 Eb11

some-bod-y, ooh, some-bod-y. Can an - y-bod - y find me \_\_\_ some-bod-y to love? \_

some-bod-y, some-bod-y, an - y-bod - y find me.) \_\_\_

*mp* *f*

29

Ab Ab/G Fm Db Eb

— yeah. 2. I work \_

*mp*

34

Red. Red. Red.

Ab Eb/G Fm7 Ab Bb Eb

hard ev - 'ry day of my life, I work 'til I ache my \_\_\_ bones. At the \_

(He works hard.)

*mf*

4

A $\flat$

E $\flat$ /G

Fm

B $\flat$

38

end

I take home

my — hard-earned pay —

all —

(At the end of the day, —

goes

home, —

— on my own. —

I go down —

on my knees

and I — start to pray —

'til the

goes home on his own.

Down,

knees,

praise the Lord. \_

tears run down from my \_ eyes,

Lord,

some-bod - y,

ooh,

some - bod - y.

Can

Ooh, —

Lord,

some-bod - y,

please,

*mp*

E $\flat$ /G



Fm7



D $\flat$ maj9



E $\flat$ 11



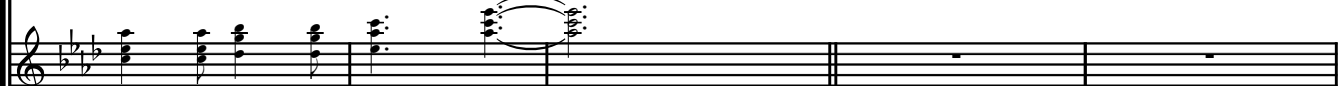
A $\flat$



48



an - y - bod - y find me \_\_\_\_\_ some - bod - y to love? \_\_\_\_\_



an - y - bod - y find me.) \_\_\_\_\_



A $\flat$ 9



D $\flat$



D $\flat$ 7



53



\_\_\_\_\_ Ev - 'ry day, I've tried and I've tried and I've



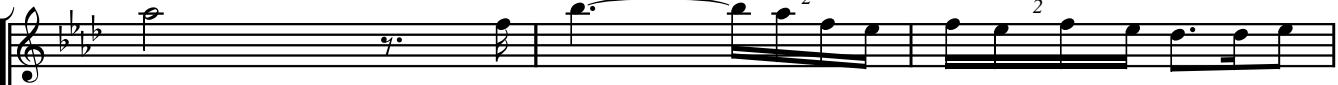
(He works hard ev-'ry day, - tried I've tried I've



G $\flat$



58



tried, but ev - 'ry - bod - y wants to put me down, they say



tried. Ooh, \_\_\_\_\_



Gbm

Bb

61



Musical staff with treble clef, key signature of two flats, and a 7/8 time signature. It contains a melodic line with slurs and ties.

I'm go - ing cra - zy. — They say I got a lot of wa - ter in my

Musical staff with treble clef, key signature of two flats, and a 7/8 time signature. It contains a sustained chordal accompaniment.

ooh, — ah. —

Piano accompaniment for measures 61-63, featuring a steady eighth-note bass line and a block-chord melody in the right hand.

64

Eb11



Musical staff with treble clef, key signature of two flats, and a 7/8 time signature. It contains a melodic line with a finger number '2' and a slur.

brain, but I got no com - mon sense, I got no - bod - y left to be - lieve. —

Musical staff with treble clef, key signature of two flats, and a 7/8 time signature. It contains a sustained chordal accompaniment.

He's got no - bod - y left to be - lieve. —

Piano accompaniment for measures 64-67, featuring a steady eighth-note bass line and a block-chord melody in the right hand.

68

Ab

Cm/G

Fm7

Ab

Bb



Musical staff with treble clef, key signature of two flats, and a 7/8 time signature. It contains a melodic line with slurs.

Guitar Solo

Musical staff with treble clef, key signature of two flats, and a 7/8 time signature. It contains a guitar solo with slurs and ties.

Yeah, — yeah, — yeah, — yeah.) —

Piano accompaniment for measures 68-71, featuring a steady eighth-note bass line and a block-chord melody in the right hand. A dynamic marking 'f' is present.

73

E $\flat$       A $\flat$       Cm/G      Fm      B $\flat$       E $\flat$

78

A $\flat$       B $\flat$ 7      E $\flat$       B $\flat$ 7      E $\flat$       D $\flat$

(Ooh, \_\_\_\_\_ Lord,

82

A $\flat$       E $\flat$ /G      Fm7      D $\flat$ maj9      E $\flat$ 11

Ooh, some-bod-y, ooh, \_\_\_\_\_ an - y-bod - y find me \_\_\_\_\_ some -

some-bod-y, some - bod-y, an - y-bod - y find me, \_\_\_\_\_

*mf*      *f*





Musical notation for the first system, including a treble clef staff with a melodic line and a piano accompaniment.

- bod-y to love? \_\_\_\_\_ 3. Got no

Musical notation for the second system, including a treble clef staff with a melodic line and a piano accompaniment.

can an - y - bod - y \_\_\_\_\_ find me \_\_\_\_\_ some - one \_ to

Musical notation for the third system, including a grand staff with piano accompaniment.

Red. Red. Red.



Musical notation for the fourth system, including a treble clef staff with a melodic line and a piano accompaniment.

feel, \_\_\_\_\_ I got no rhy - thm, I'll \_\_\_\_\_ just keep los - ing my beat. \_ I'm

Musical notation for the fifth system, including a treble clef staff with a melodic line and a piano accompaniment.

love?) \_\_\_\_\_ (He'll just keep los - ing and

Musical notation for the sixth system, including a grand staff with piano accompaniment.



Musical notation for the seventh system, including a treble clef staff with a melodic line and a piano accompaniment.

O - K. I'm al - right, I ain't gon - na face \_ no de - feat. I just

Musical notation for the eighth system, including a treble clef staff with a melodic line and a piano accompaniment.

los - ing. He's al - right, he's al - right, \_\_\_\_\_ yeah.) \_\_\_\_\_

Musical notation for the ninth system, including a grand staff with piano accompaniment.

A $\flat$ 
B $\flat$ 
E $\flat$ 
B $\flat$ 
E $\flat$ 
D $\flat$

100

got-ta get out \_\_\_ of this pris-on cell, some - day I'm gon - na \_ be free, Lord.

(Ooh, \_\_\_\_\_ this pris-on cell, some - day I'm gon-na be free, Lord.)

105 N.C.

(Find me some - bod - y to love, \_ find me some - bod - y to love. \_ Find me some -

*pp* *mp*

110

bod - y to love, \_ find me some - bod - y to love. \_\_\_ Find me some - bod - y to love, \_\_\_



115

find me some - bod - y to love. \_\_\_\_ Find me some - bod - y to love. \_\_\_\_

119

Find me some - bod - y to love. \_\_\_\_ Find me some -

122

bod - y to love, \_\_\_\_ find me some - bod - y to love. \_\_\_\_

126

Some - bod - y, some - bod - y, some - bod - y, some - bod - y, some - bod - y, find me some - bod - y, find me some -

A<sup>b</sup>  
4
E<sup>b</sup>/G  
3
Fm7
D<sup>b</sup>maj9
E<sup>b</sup>11  
6

130

Can an - y - bod - y find me \_\_\_\_\_

bod - y to love. An - y - bod - y find me.) \_\_\_\_\_

*ff*

**Free time**

134 N.C.

some - bod - y to \_\_\_\_\_ love? \_\_\_\_\_

**Free time**

A<sup>b</sup>  
4
A<sup>b</sup>/G  
x x x x
Fm
D<sup>b</sup>  
x x x x 4
E<sup>b</sup>  
x x x x
A<sup>b</sup>  
4
*Play 6x*

140

*ad lib. vocals*

love.) (Find me some - bod - y to \_\_\_\_\_ love.

145

Find me, find me, find me, find me...